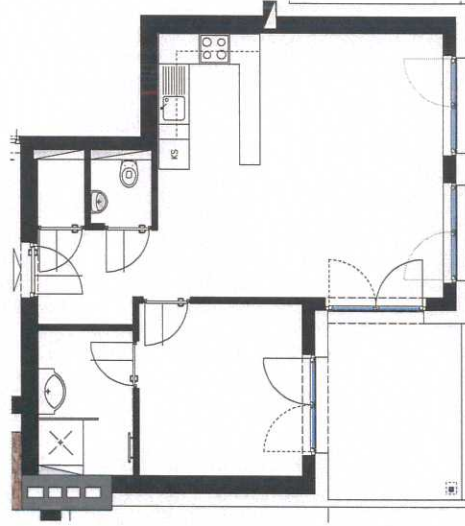


APARTMENTS AM BROXWEG  
MONTJOLA

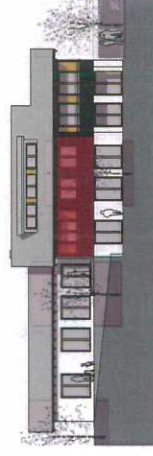
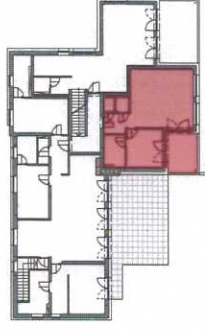
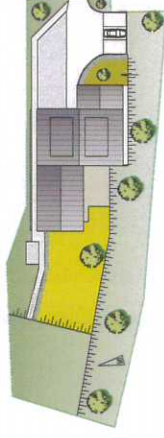
2 - Zimmer - Wohnung

TOP 102



Wohnfläche

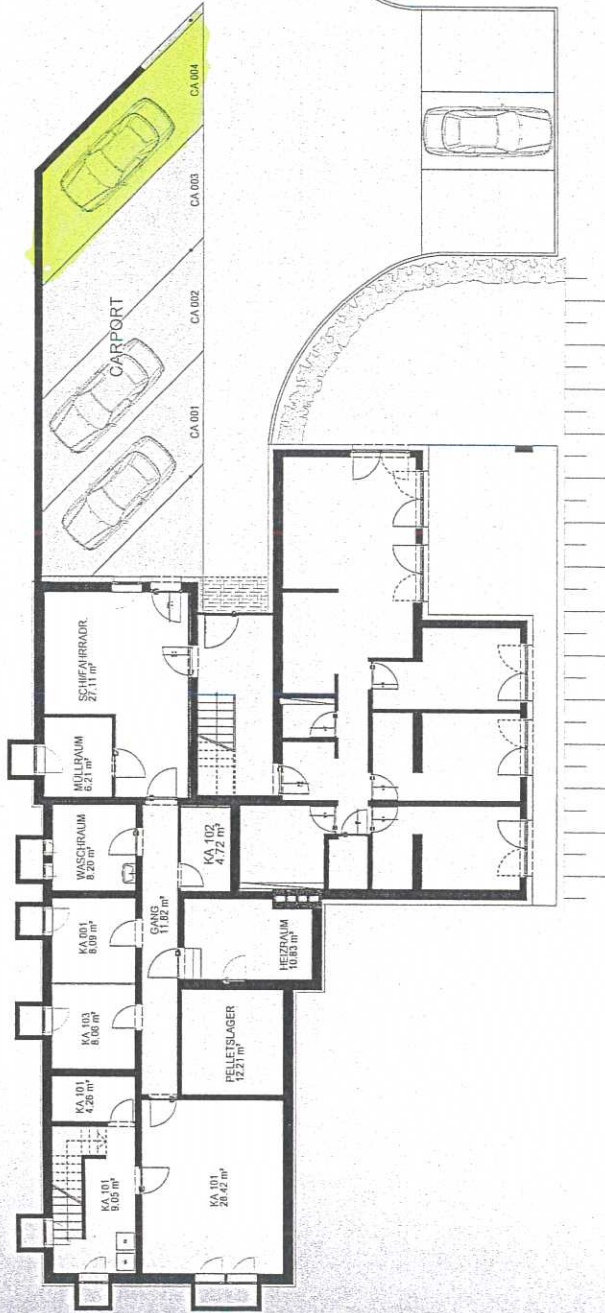
53.62 m<sup>2</sup>



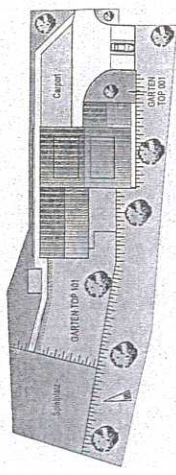
# APARTMENTS AM BROXWEG MONTJOLA

## KELLER

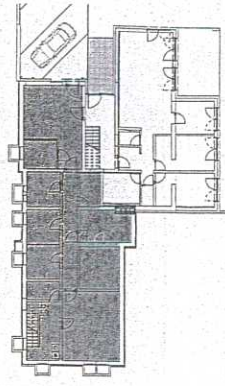
KA 101	4,26
KA 101	9,05
KA 101	28,42
KA 001	8,09
KA 102	4,72
KA 103	8,06
SCHIFAHRRADR.	27,11
WASCHRAUM	8,20
MULLRAUM	6,21



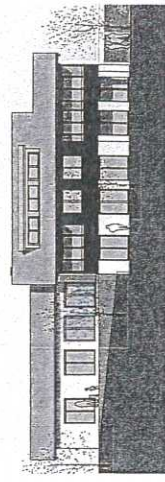
*Carport Cooy*



LAGEPLAN



UBERSICHT GRUNDRISS



ANIMATIONS-BILD