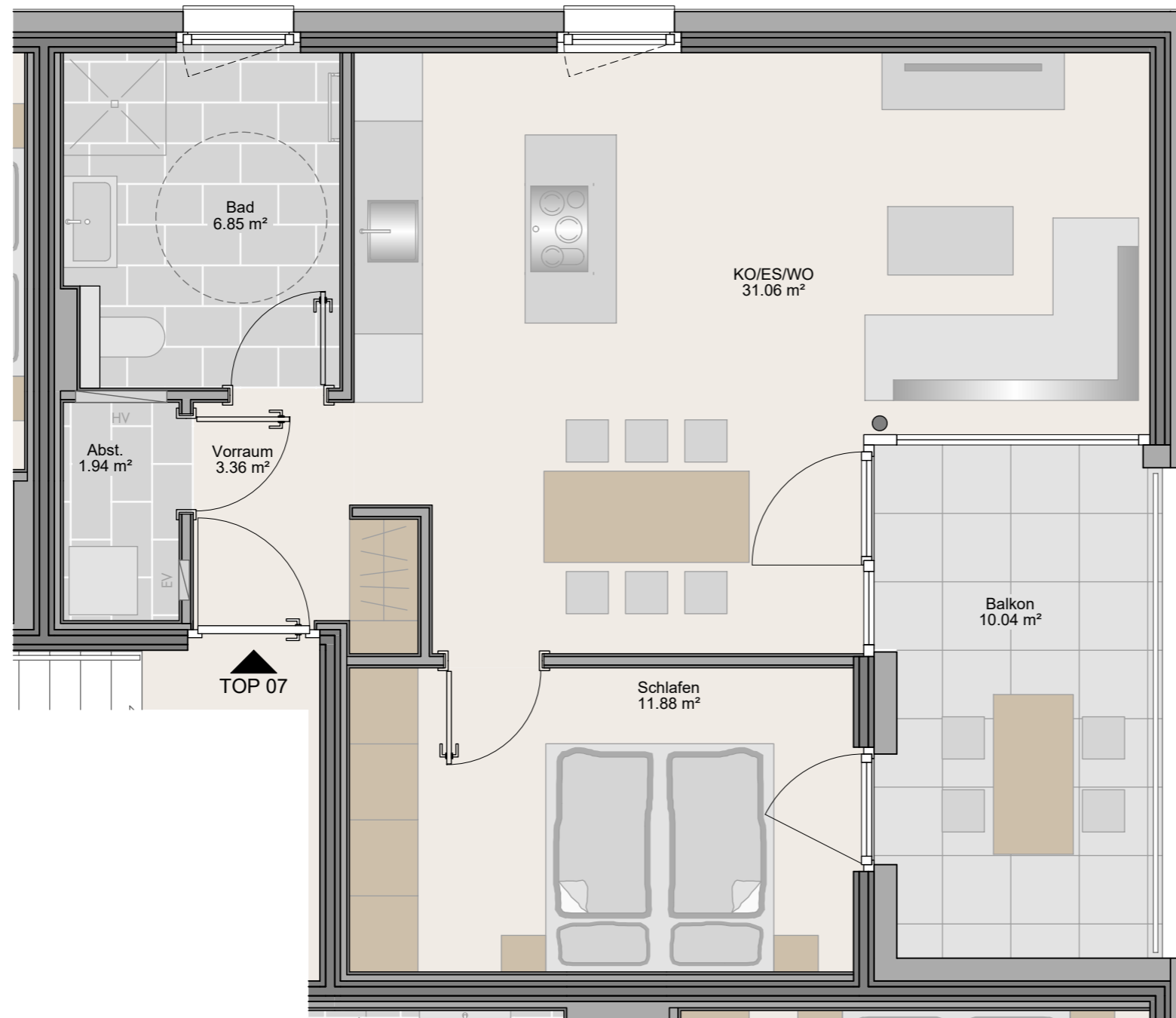
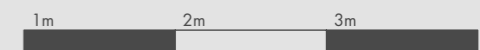
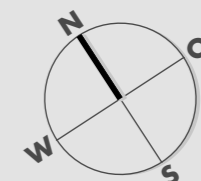
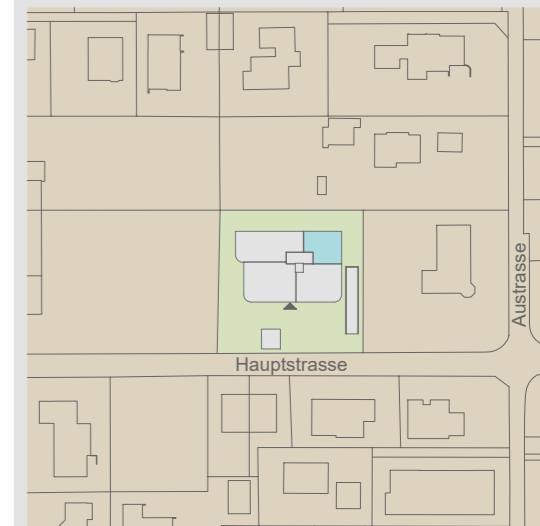


# Hauptstrasse Gisingen

TOP 07  
2-Zimmer-Wohnung  
Obergeschoss 55.09m<sup>2</sup>



Kochen/Essen/Wohnen	31.06 m <sup>2</sup>
Schlafen	11.88 m <sup>2</sup>
Bad	6.85 m <sup>2</sup>
Abstellraum	1.94 m <sup>2</sup>
Vorraum	3.36 m <sup>2</sup>
<b>Wohnnutzfläche</b>	<b>55.09 m<sup>2</sup></b>
Balkon	10.04 m <sup>2</sup>
Kellerabteil	6.64 m <sup>2</sup>



Maßstab 1:50 (1cm = 50cm)

23.03.2022