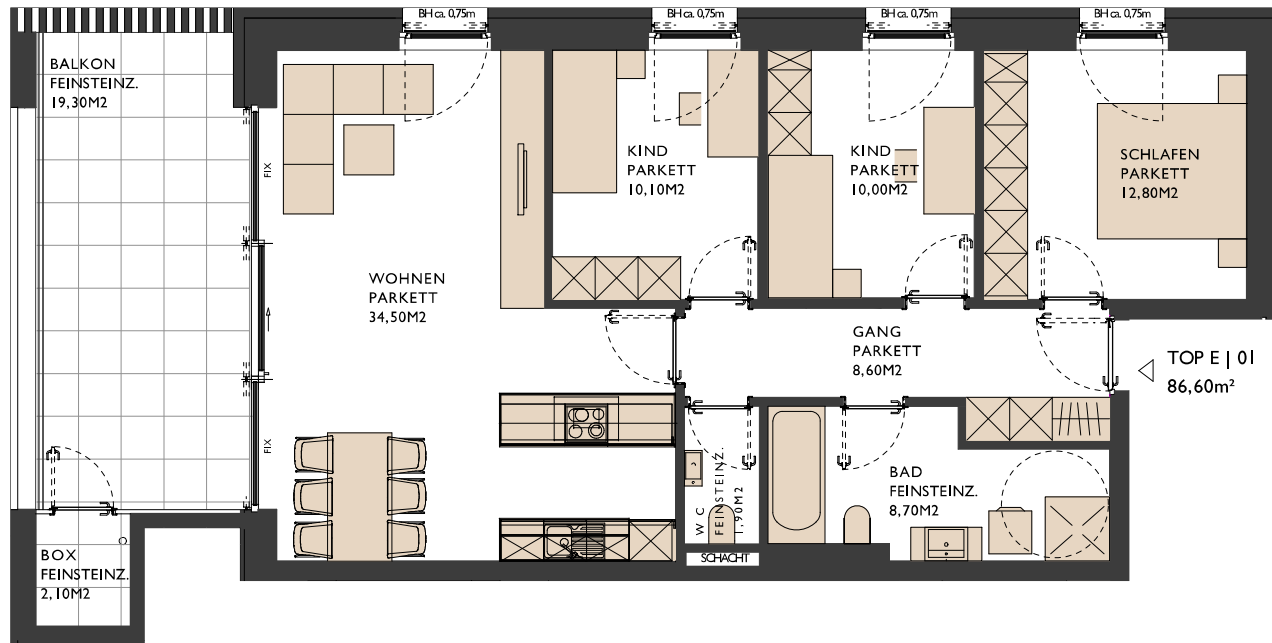


Wohnen über'm Rheintal

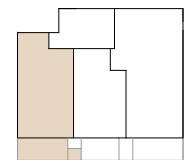
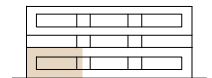
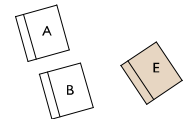
Dornbirn | Am Knie



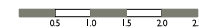
Haus E | Top 01 Erdgeschoss | EG 4-Zimmer-Wohnung

Wohnfläche:	86,60 m ²
Terrasse:	19,30 m ²
Abstellbox:	2,10 m ²
Kellerabteil UG:	6,50 m ²

TOP E | 01
86,60m²



Maßstab
1:75 A3



Eine Kooperation von:

