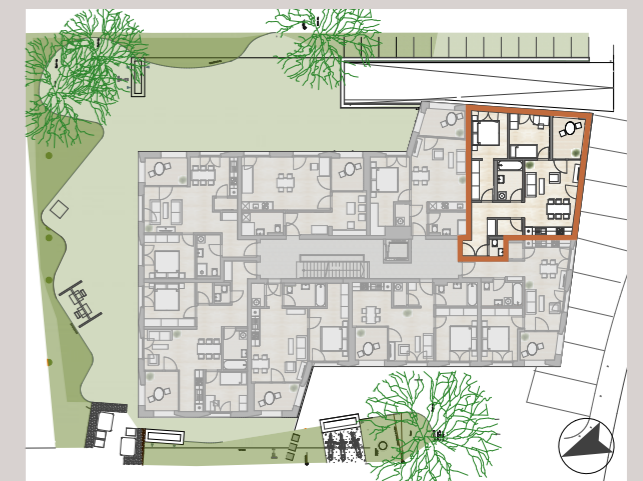




## Hadeldorfstraße 4

1.OBERGESCHOSS



TOP W-06	70,05m <sup>2</sup>
WO / ESS / KÜ	23,25m <sup>2</sup>
DIELE	5,42m <sup>2</sup>
GANG	5,00m <sup>2</sup>
ZIMMER 1	10,12m <sup>2</sup>
ANKLEIDE	5,36m <sup>2</sup>
ZIMMER 2	10,63m <sup>2</sup>
ABSTELLR.	2,46m <sup>2</sup>
BAD	6,12m <sup>2</sup>
WC	1,69m <sup>2</sup>
LOGGIA	7,42m <sup>2</sup>

Hadeldorfstraße 4, 6830 Rankweil  
Planstand 09.04.20

Ansprechpartner:  
Hajek Riedmann Projekt GmbH  
Torkelweg 1, 6832 Röthis  
T 05522 93081



Mst. 1:50



1m