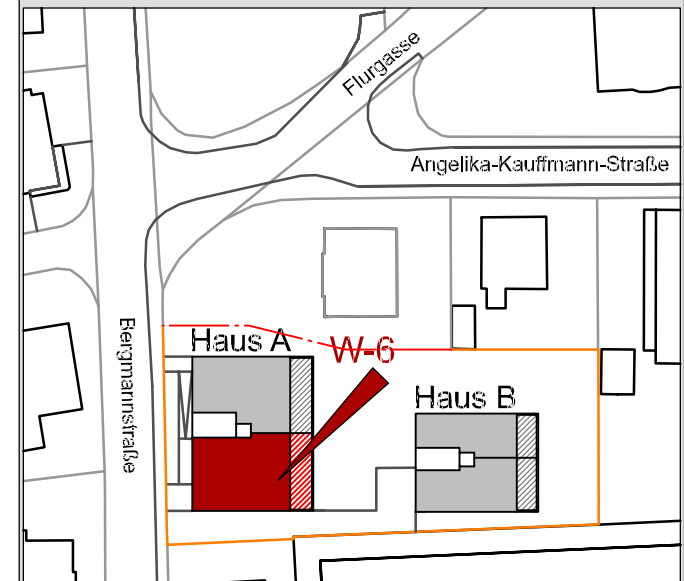
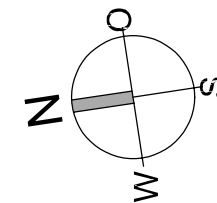
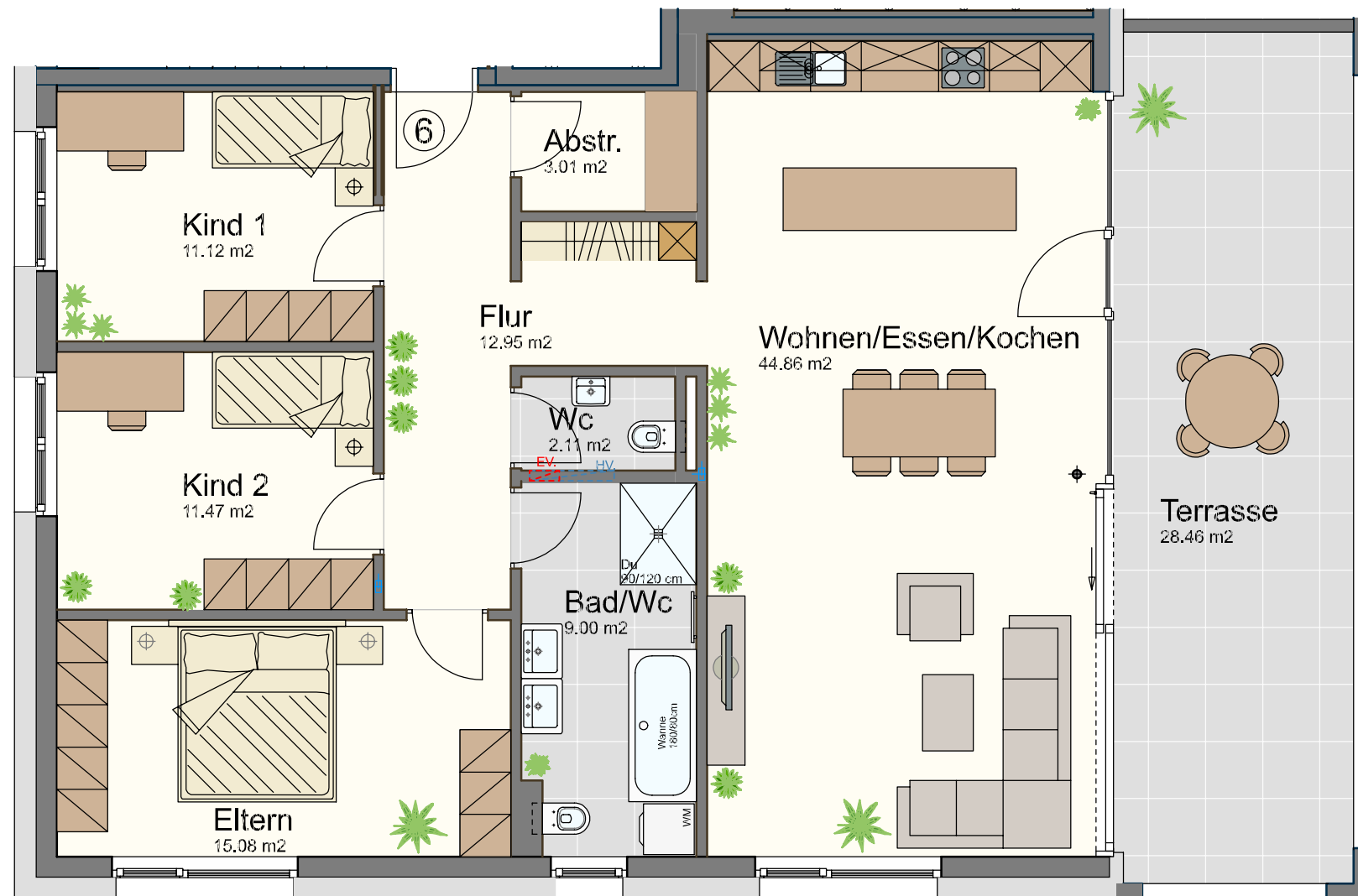


# Bergmannstraße Dornbirn

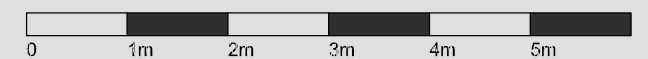
## Haus A Wohnung W-6

4-Zimmer-Wohnung  
im 2. Obergeschoss mit 109.60 m<sup>2</sup>

Flur	12.95 m <sup>2</sup>
Wc	2.11 m <sup>2</sup>
Bad/Wc	9.00 m <sup>2</sup>
Abstellraum	3.01 m <sup>2</sup>
Kind 1	11.12 m <sup>2</sup>
Kind 2	11.47 m <sup>2</sup>
Eltern	15.08 m <sup>2</sup>
Wohnen/Essen/Kochen	44.86 m <sup>2</sup>
<b>Gesamt</b>	<b>109.60 m<sup>2</sup></b>
Terrasse	28.46 m <sup>2</sup>
Kellerabteil	7.06 m <sup>2</sup>



Maßstab 1:75 (1cm = 75cm)



Datum 6. März 2019