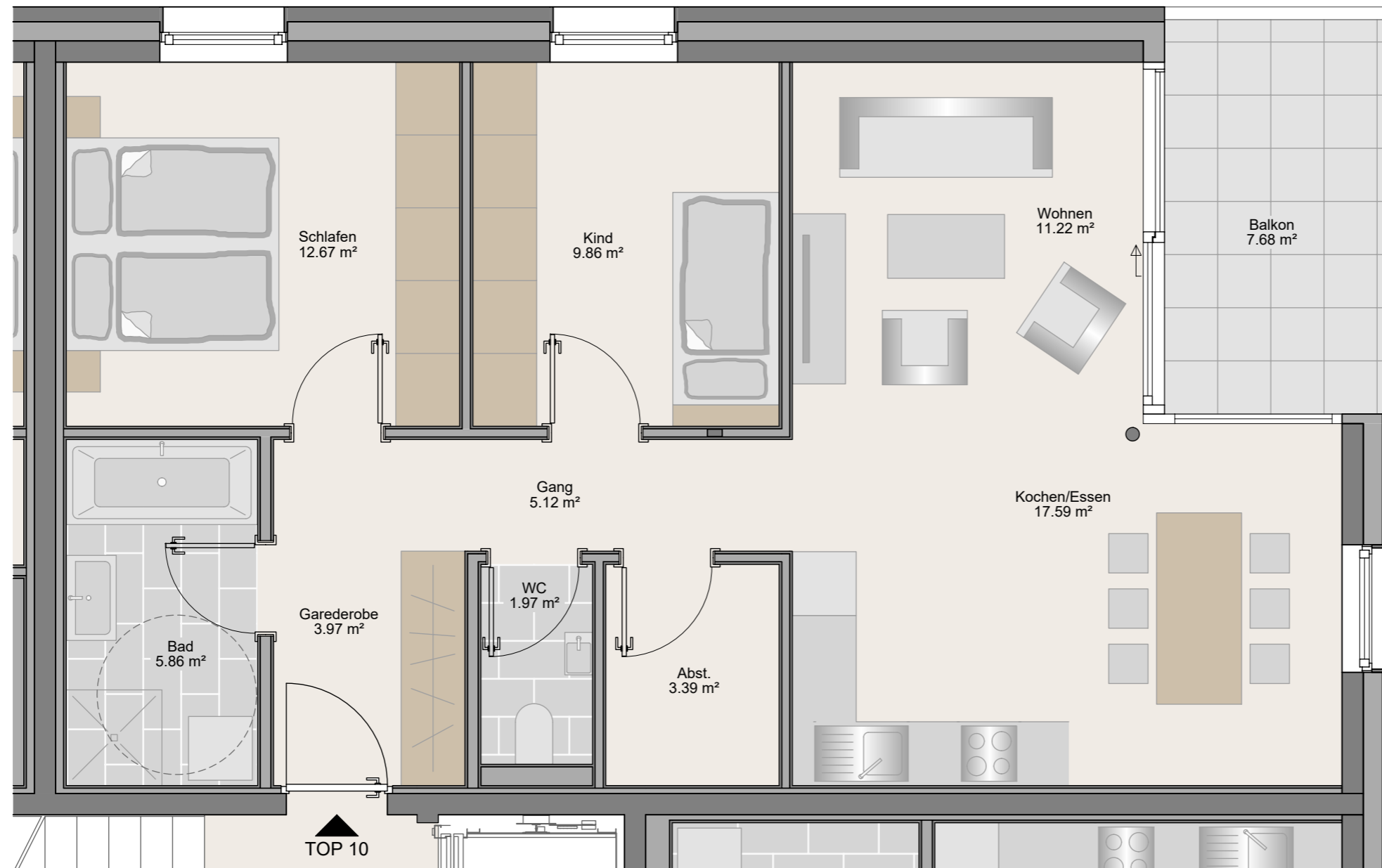
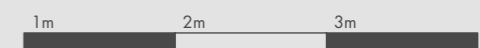
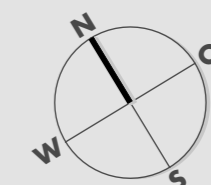
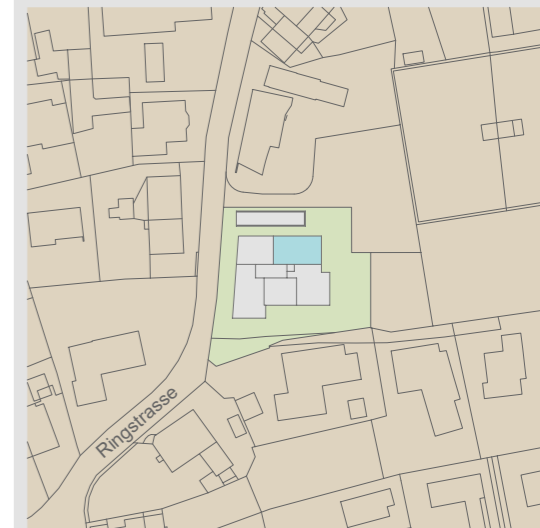


# Wohnpark Ringstrasse Gisingen

TOP 10  
3-Zimmer-Wohnung  
2.Obergeschoss 71.61 m<sup>2</sup>



Kochen/Essen	17.59 m <sup>2</sup>
Wohnen	11.22 m <sup>2</sup>
Schlafen	12.67 m <sup>2</sup>
Kind	9.86 m <sup>2</sup>
Bad	5.86 m <sup>2</sup>
WC	1.97 m <sup>2</sup>
Abstellraum	3.39 m <sup>2</sup>
Gang	5.12 m <sup>2</sup>
Garderobe	3.97 m <sup>2</sup>
<b>Wohnnutzfläche</b>	<b>71.61 m<sup>2</sup></b>
Balkon	7.68 m <sup>2</sup>
Kellerabteil	4.48 m <sup>2</sup>



Maßstab 1:50 (1cm = 50cm)

04.05.2022

