

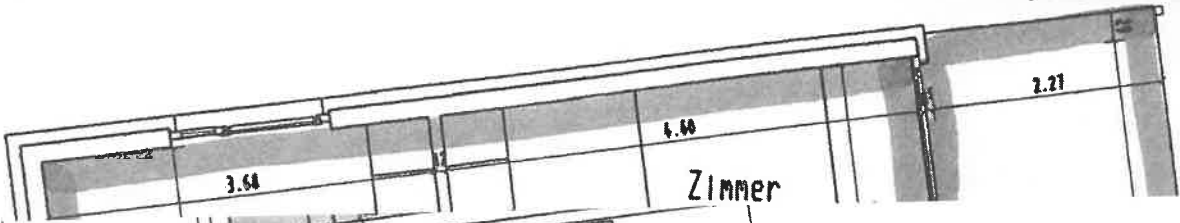
OG HAUS_A/B

TOP 6

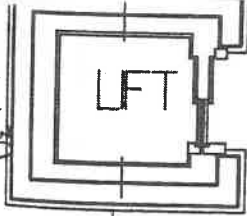


30
29.8

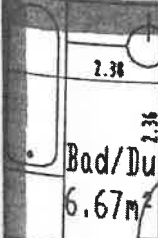
30
6.14
30



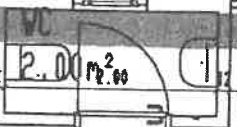
Zimmer



LFT

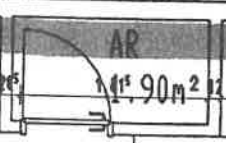


Bad/Du
6.67m²



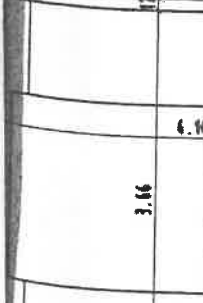
WC
2.00m²

Diele
10.52m²

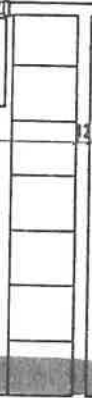


AR
1.90m²

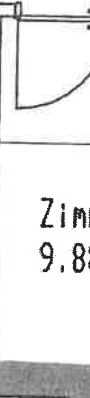
Koch/Ess/Wohn
32.54m²



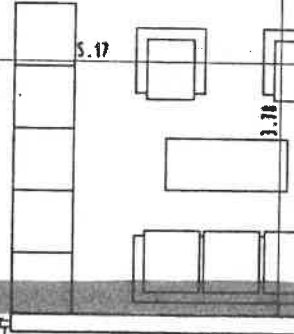
Zimmer
15.01m²



Zimmer
9.88m²



Zimmer
9.88m²



Terrasse
30.62m²