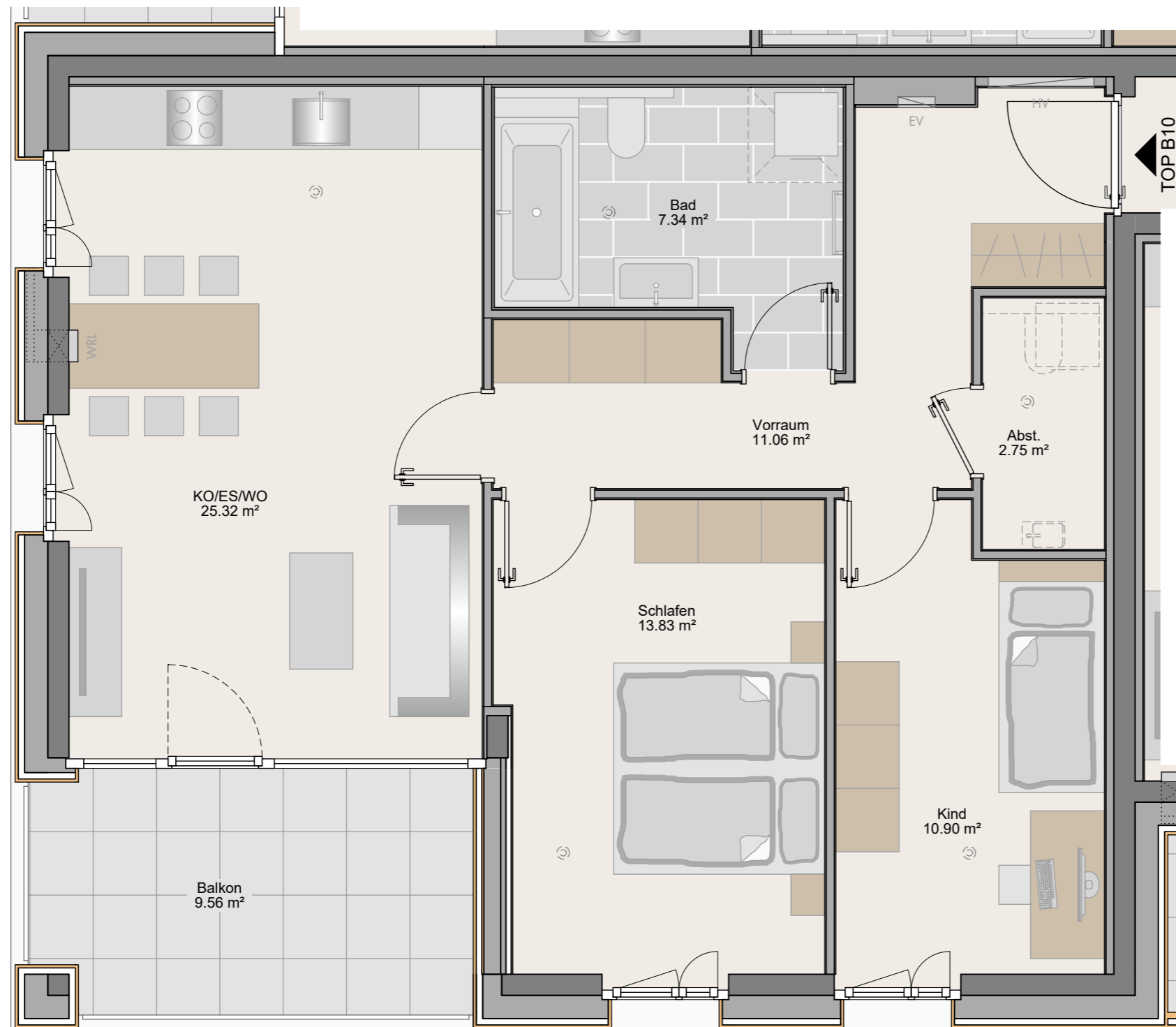
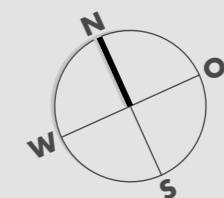
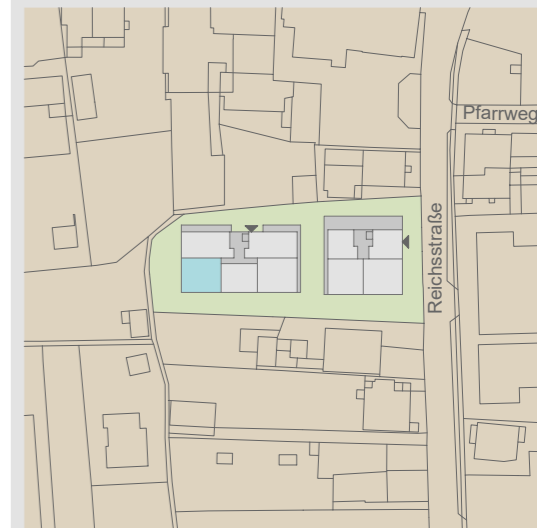


Wohnanlage Zentrum Altstadt

TOP B10 - Variante 1
3-Zimmer-Wohnung
1.Obergeschoss 71.20m²



| | |
|-----------------------|----------------------------|
| Wohnen/Eszen/Kochen | 25.32 m ² |
| Schlafen | 13.83 m ² |
| Kind | 10.90 m ² |
| Bad | 7.34 m ² |
| Abstellraum | 2.75 m ² |
| Vorraum | 11.06 m ² |
| Wohnnutzfläche | 71.20 m² |
| Balkon | 9.56 m ² |
| Kellerabteil | 7.71 m ² |



Maßstab 1:50 (1cm = 50cm)

08.05.2024