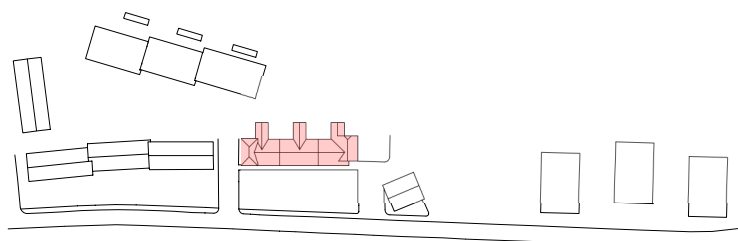
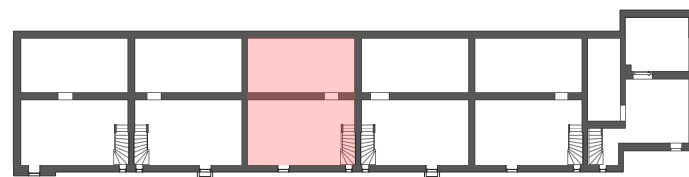


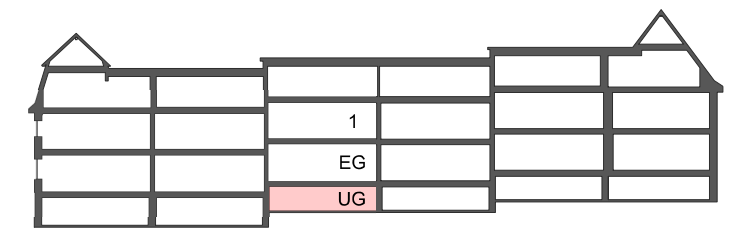
M 1:50



ÜBERSICHTSPLAN



SCHEMAGRUNDRISS



SCHEMASCHNITT

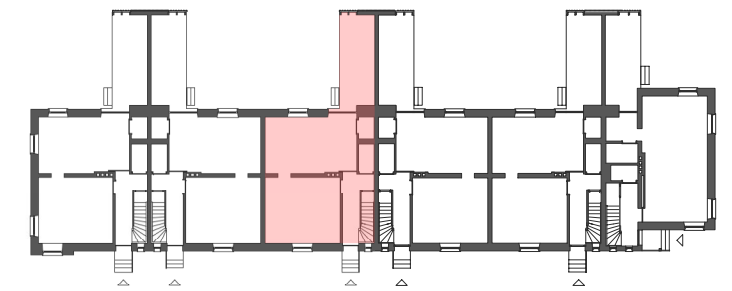
Arbeiterwohnhäuser-Bündlittenstraße 12 - 22, Dornbirn

Hausnummer 18

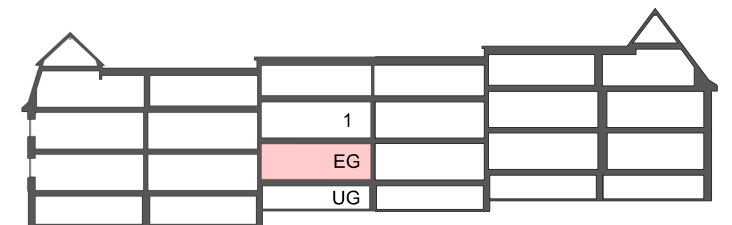
Erdgeschoss

NF = 106.13m<sup>2</sup>

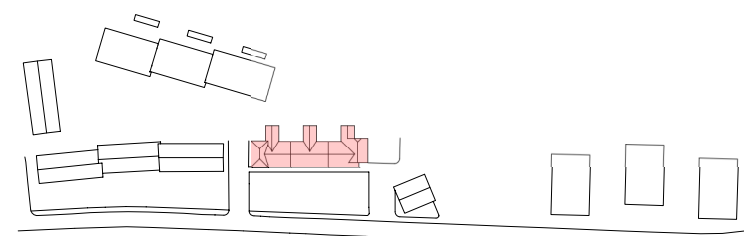
Loggia = 14.33m<sup>2</sup>



SCHEMAGRUNDRISS

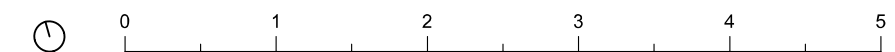


SCHEMASCHNITT

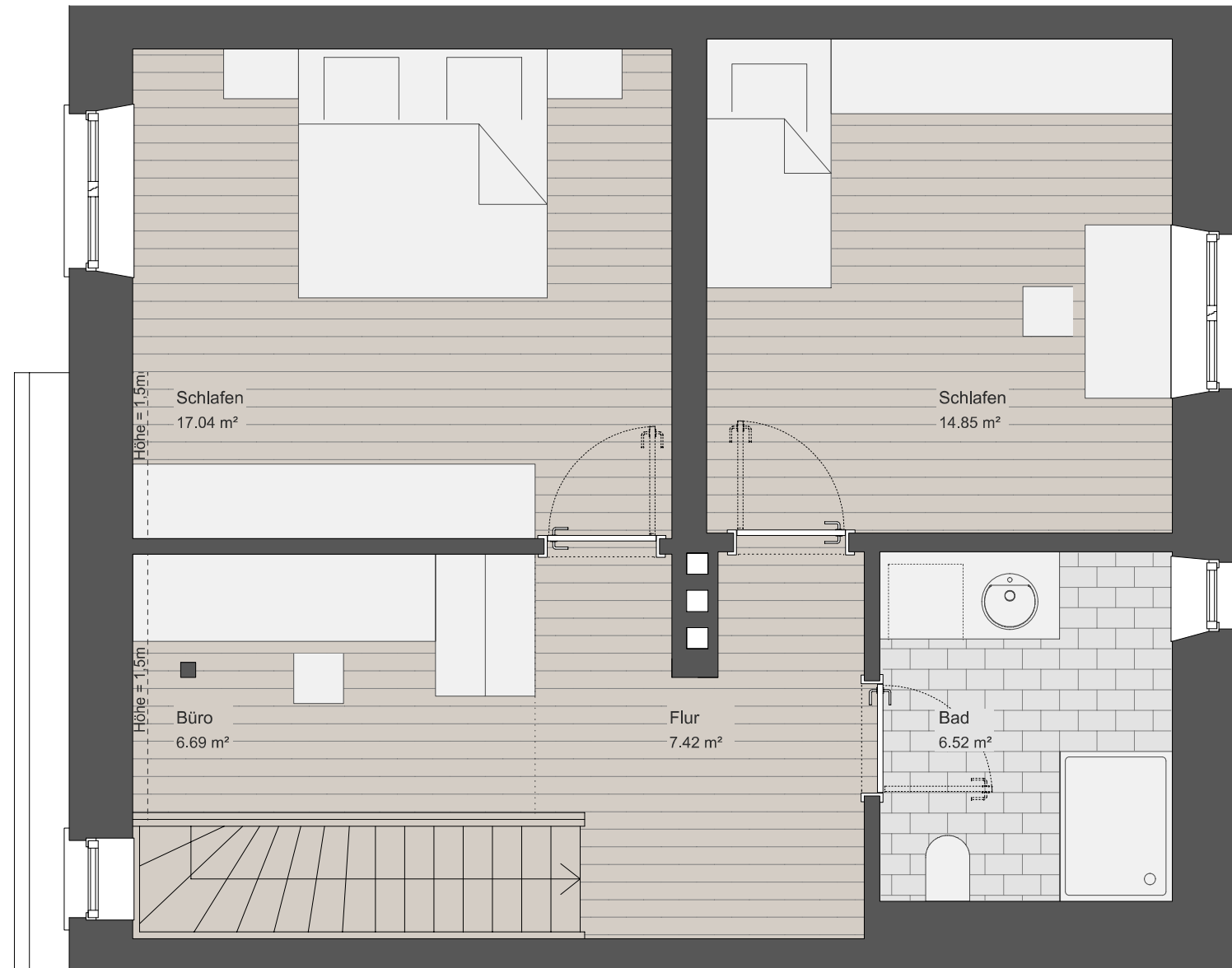


ÜBERSICHTSPLAN

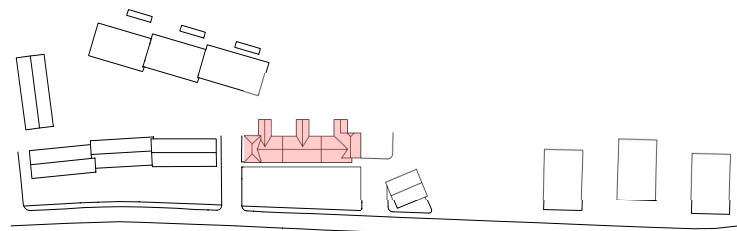
M 1:50



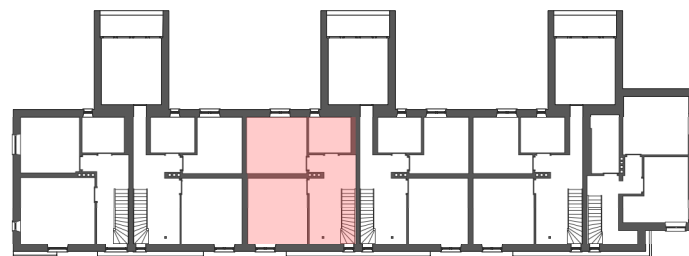
Flächenangaben beziehen sich auf Bodenflächen. Die effektive Flächen können aufgrund der Bestandsadaptierungen abweichen.



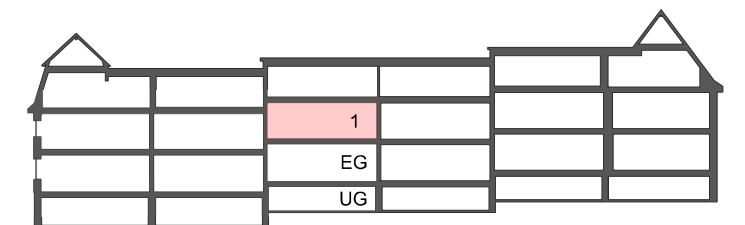
M 1:50



ÜBERSICHTSPLAN



SCHEMAGRUNDRISS



SCHEMASCHNITT