







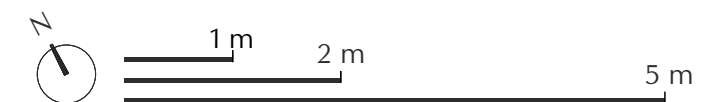


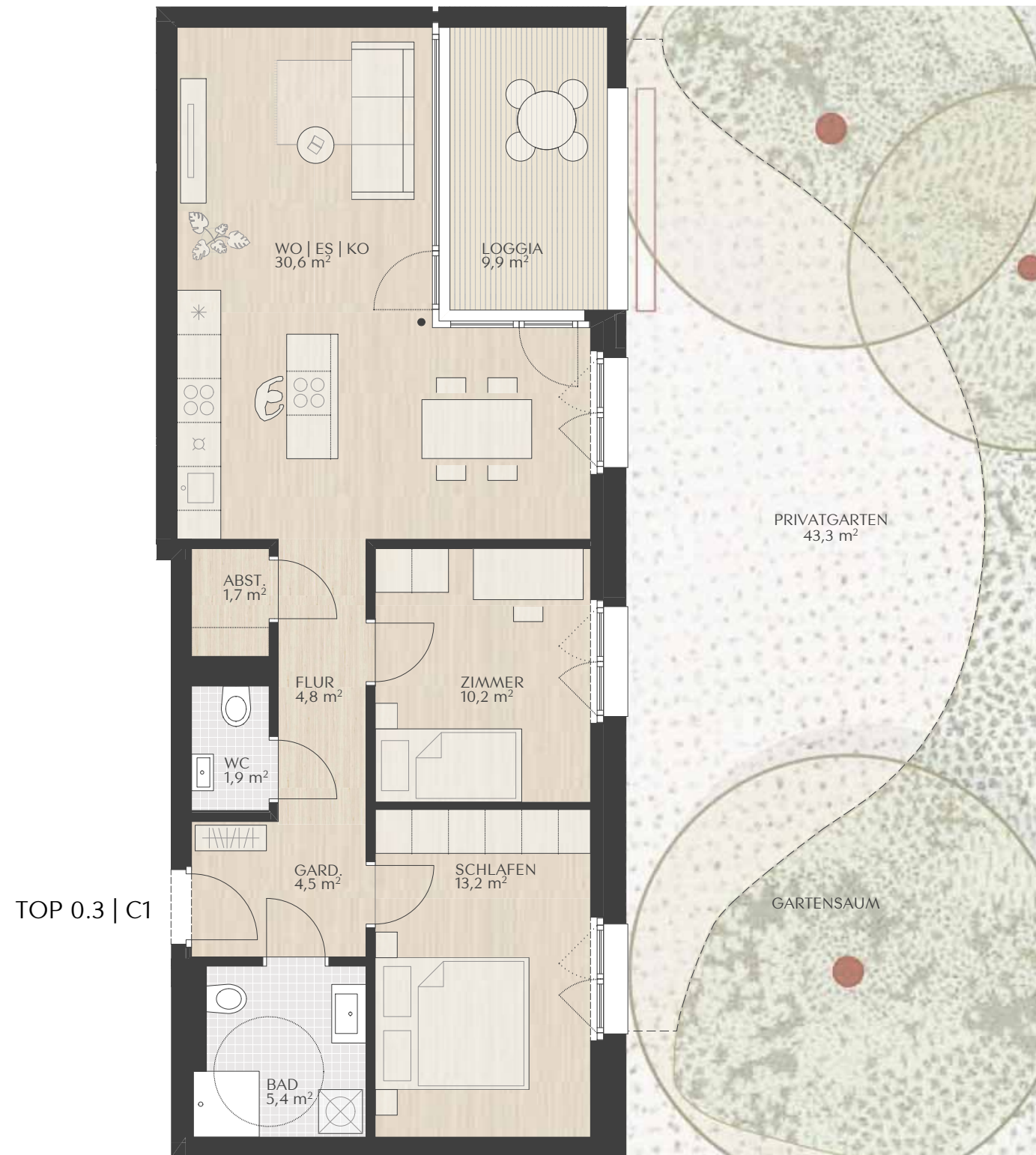
TOP 0.1/C1

ERDGESCHOSS

ZIMMER	3
WOHNFLÄCHE	65,60 m ²
LOGGIA	6,90 m ²
GARTENFLÄCHE	16,80 m ²

-  PARKETT
-  FLIESEN
-  BETONPLATTEN
-  KIESBELAG IN PRIVATGARTEN
-  KÜHLSCHRANKANSCHLUSS
-  GESCHIRRSPÜLERANSCHLUSS





TOP 0.3 | C1

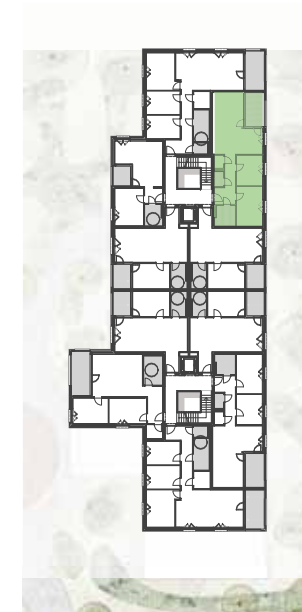


TOP 0.3/C1

ERDGESCHOSS

ZIMMER	3
WOHNFLÄCHE	72,30 m ²
LOGGIA	9,90 m ²
GARTENFLÄCHE	43,30 m ²







- PARKETT
- FLIESEN
- BETONPLATTEN
- KIESBELAG IN PRIVATGARTEN
- KÜHLSTRANKANSCHLUSS
- GESCHIRRSPÜLERANSCHLUSS

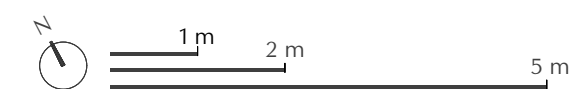


TOP 1.1/C1

Obergeschoss I

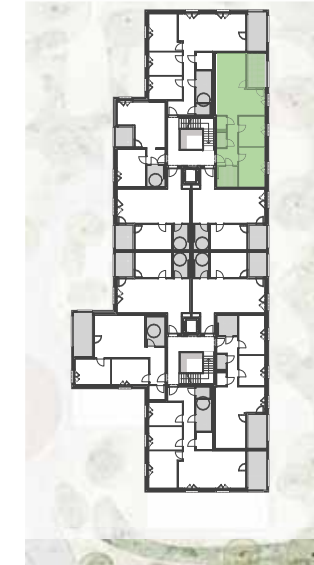
ZIMMER	3
WOHNFLÄCHE	72,60 m ²
LOGGIA	9,20 m ²

-  PARKETT
-  FLIESEN
-  BETONPLATTEN
-  KIESBELAG IN PRIVATGARTEN
-  KÜHLSCHRANKANSCHLUSS
-  GESCHIRRSPÜLERANSCHLUSS











TOP 2.1 | C1

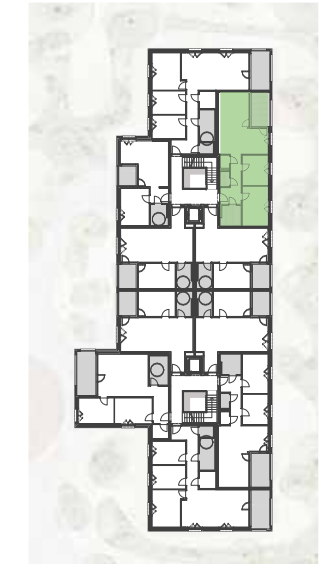


TOP 2.1/C1

Obergeschoss II

ZIMMER	3
WOHNFLÄCHE	72,60 m ²
LOGGIA	9,20 m ²







-  PARKETT
-  FLIESEN
-  BETONPLATTEN
-  KIESBELAG IN PRIVATGARTEN
-  KÜHLSCHRANKANSCHLUSS
-  GESCHIRRSPÜLERANSCHLUSS

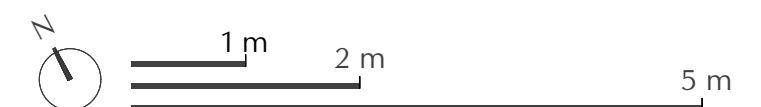


TOP 3.1/C1

Obergeschoss III

ZIMMER	3
WOHNFLÄCHE	72,60 m ²
LOGGIA	9,20 m ²

-  PARKETT
-  FLIESEN
-  BETONPLATTEN
-  KIESBELAG IN PRIVATGARTEN
-  KÜHLSCHRANKANSCHLUSS
-  GESCHIRRSPÜLERANSCHLUSS











TOP 0.2/C2

ERDGESCHOSS

ZIMMER	3
WOHNFLÄCHE	72,20 m ²
LOGGIA	9,90 m ²
GARTENFLÄCHE	49,10 m ²

-  PARKETT
-  FLIESEN
-  BETONPLATTEN
-  KIESBELAG IN PRIVATGARTEN
-  KÜHLSCHRANKANSCHLUSS
-  GESCHIRRSPÜLERANSCHLUSS











TOP 0.4 | C2

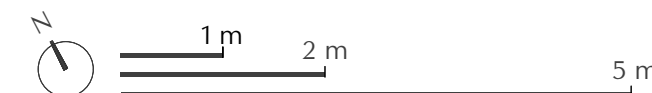


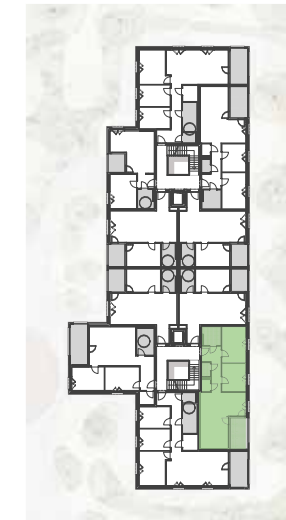
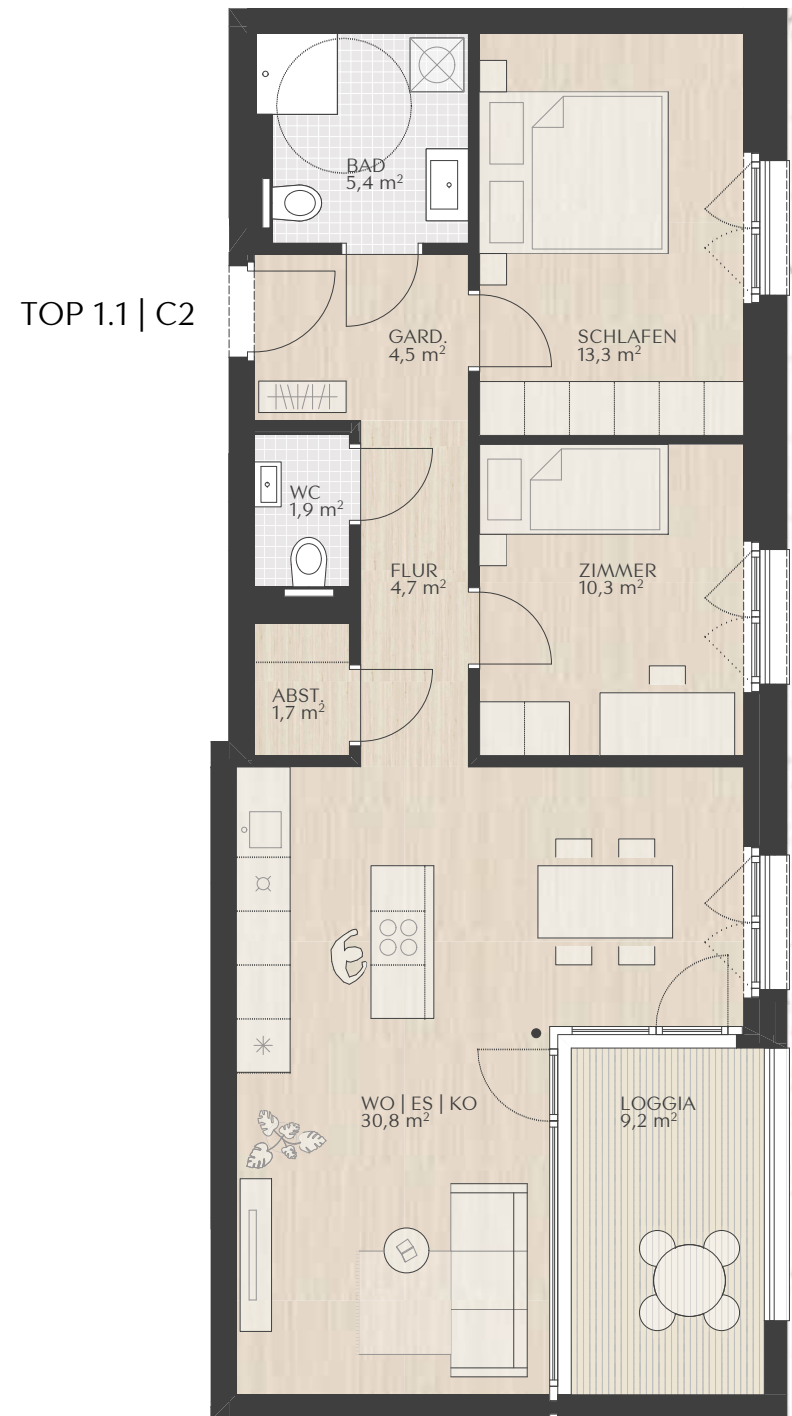
TOP 0.4/C2

ERDGESCHOSS

ZIMMER	3
WOHNFLÄCHE	76,50 m ²
LOGGIA	6,90 m ²
GARTENFLÄCHE	15,40 m ²

-  PARKETT
-  FLIESEN
-  BETONPLATTEN
-  KIESBELAG IN PRIVATGARTEN
-  KÜHLSCHRANKANSCHLUSS
-  GESCHIRRSPÜLERANSCHLUSS





TOP 1.1/C2

Obergeschoss I

ZIMMER	3
WOHNFLÄCHE	72,60 m ²
LOGGIA	9,20 m ²

- PARKETT
- FLIESEN
- BETONPLATTEN
- KIESBELAG IN PRIVATGARTEN
- KÜHLSCHRANKANSCHLUSS
- GESCHIRRSPÜLERANSCHLUSS











TOP 1.3 | C2

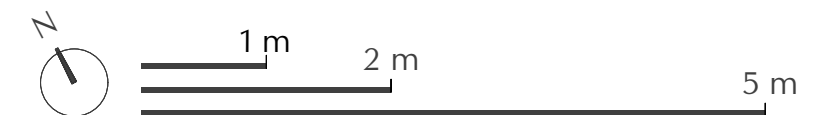


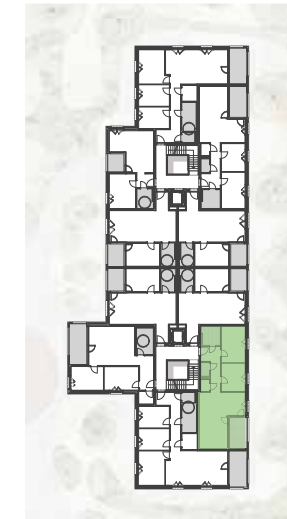
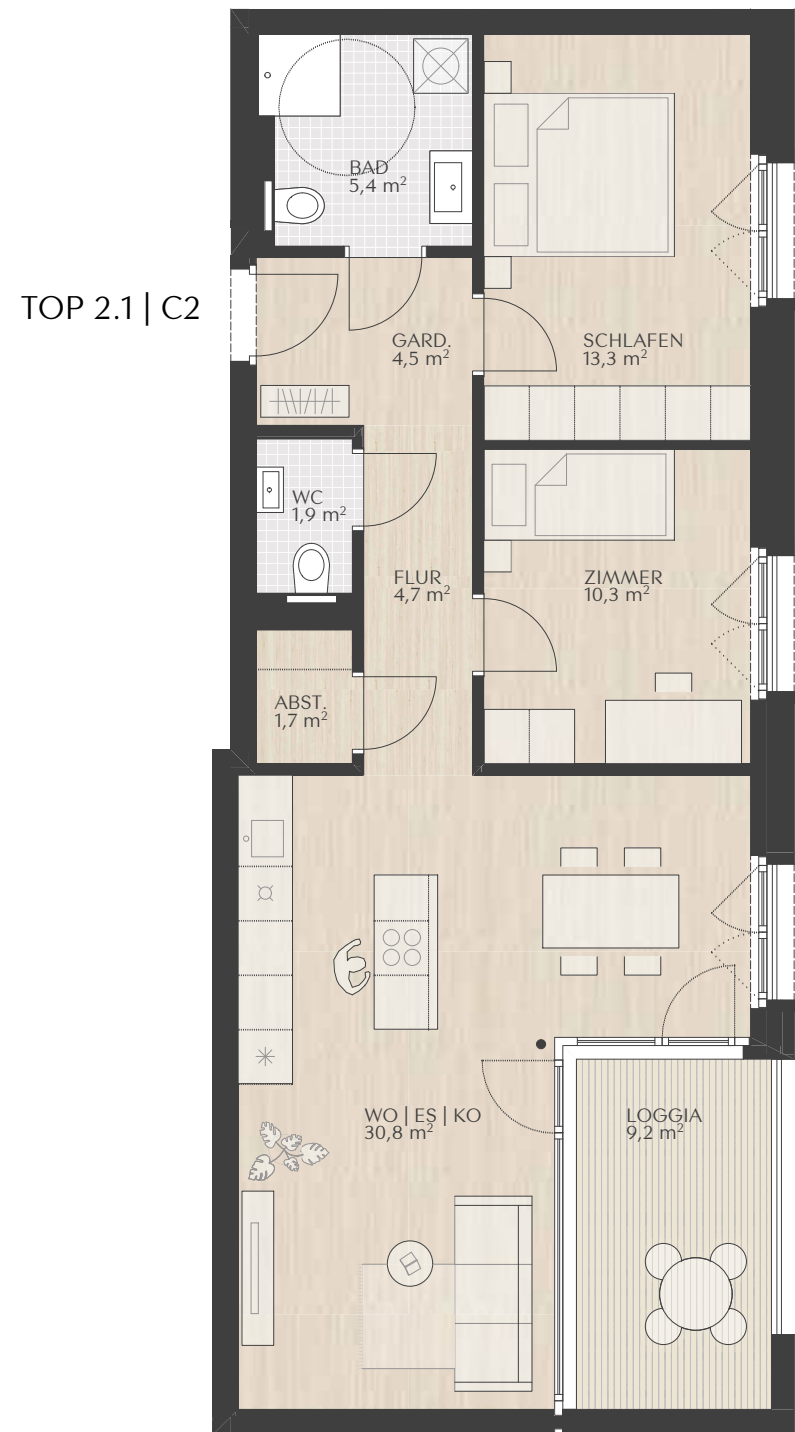
TOP 1.3/C2

Obergeschoss I

ZIMMER	3
WOHNFLÄCHE	70,50 m ²
LOGGIA	11,60 m ²

-  PARKETT
-  FLIESEN
-  BETONPLATTEN
-  KIESBELAG IN PRIVATGARTEN
-  KÜHLSCHRANKANSCHLUSS
-  GESCHIRRSPÜLERANSCHLUSS











TOP 2.1/C2

Obergeschoss II

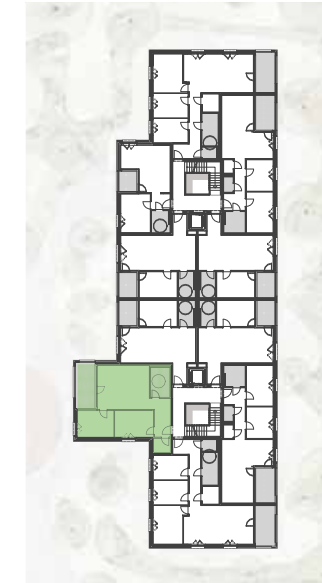
ZIMMER	3
WOHNFLÄCHE	72,60 m ²
LOGGIA	9,20 m ²

-  PARKETT
-  FLIESEN
-  BETONPLATTEN
-  KIESBELAG IN PRIVATGARTEN
-  KÜHLSCHRANKANSCHLUSS
-  GESCHIRRSPÜLERANSCHLUSS





TOP 2.3 | C2



TOP 2.3/C2

Obergeschoss II

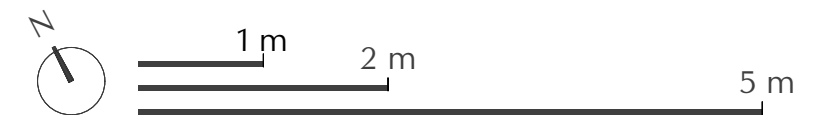
ZIMMER	3
WOHNFLÄCHE	70,50 m ²
LOGGIA	11,60 m ²

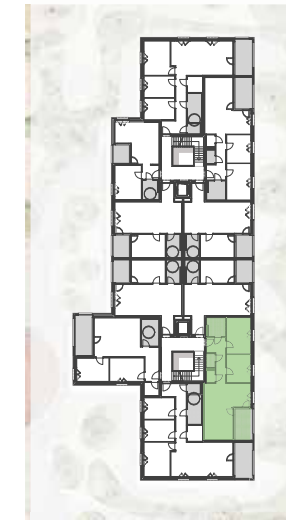
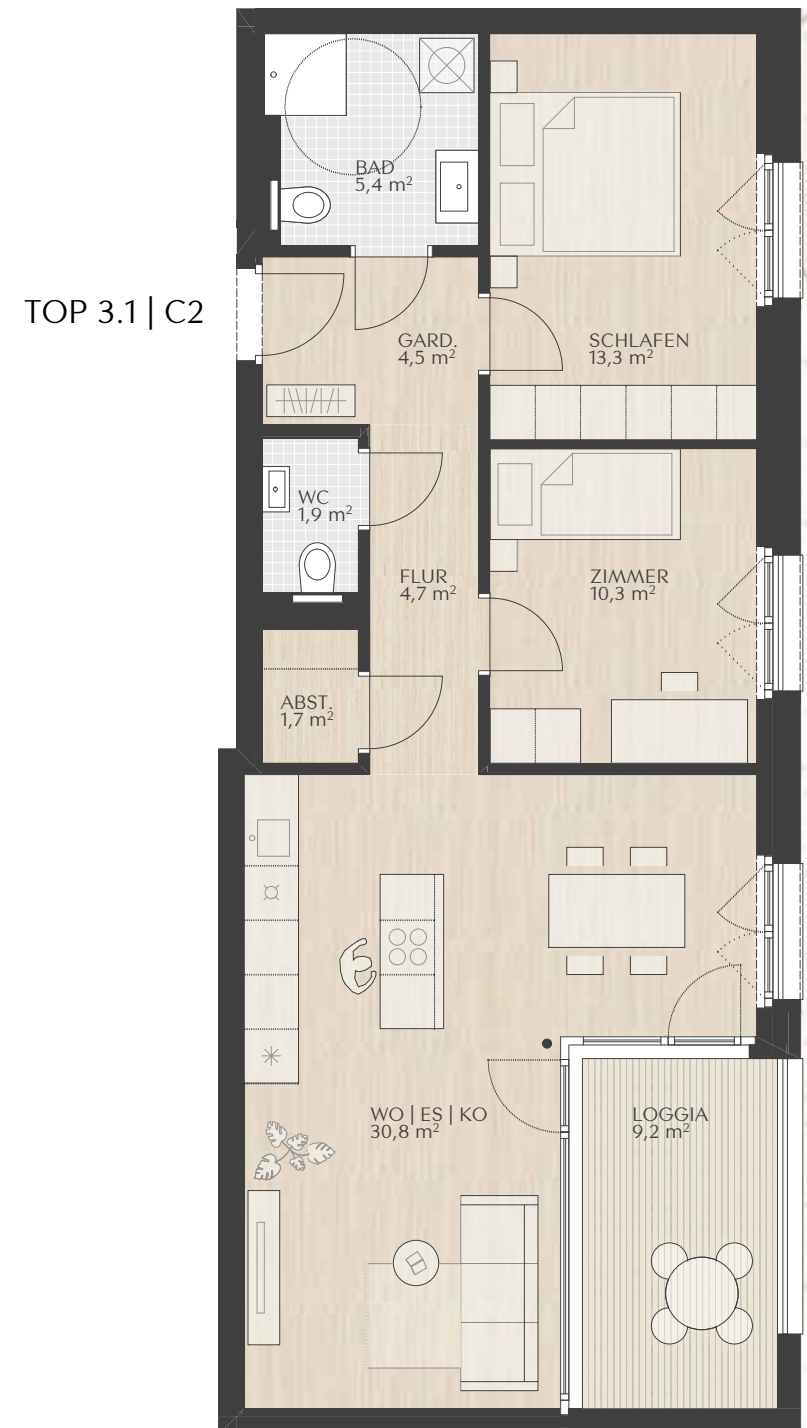
- PARKETT
- FLIESEN
- BETONPLATTEN
- KIESBELAG IN PRIVATGARTEN
- KÜHLSCHRANKANSCHLUSS
- GESCHIRRPÜLERANSCHLUSS



Die Wohnungs- und Raumgrößen sind ca. Angaben und können sich aufgrund der Ausführungsplanung und Bautoleranzen geringfügig ändern. Dieser Plan ist zum Anfertigen von Maßmöbeln nicht geeignet (dazu sind Naturmaße erforderlich). Die Einrichtung ist symbolhaft dargestellt. Die im Lieferumfang enthaltene Ausstattung ist der gültigen Bau- und Ausstattungsbeschreibung zu entnehmen. Die genaue Lage und Anordnung der im Lieferumfang enthaltenen Ausstattungsgegenstände ist den Ausführungsplänen zu entnehmen. Haushaltstechniksymbole und Sanitärgegenstände sind nicht maßgenau dargestellt und definieren nur die Lage. Einrichtungsgegenstände sind im Kaufpreis nicht enthalten. Lage der Revisionsöffnungen sowie Situierung der Zähler und Verteiler nach technischem Erfordernis. Änderungen infolge Behördenaufgabe, haustechnischer und konstruktiver Maßnahmen vorbehalten. Die gezeigten Bilder sind exemplarische Darstellungen und dienen ausschließlich zur Veranschaulichung. Druck- und Schreibfehler sind vorbehalten (gültiger Letztstand).

Swietelsky AG, Rüttenenstraße 25, 6800 Feldkirch Tel:+43 5522 72470 6765, vorarlberg.immo@swietelsky.at, www.swietelsky.immo









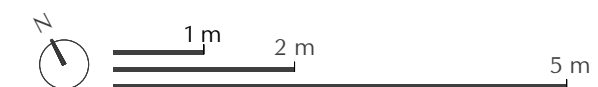


TOP 3.1/C2

Obergeschoss III

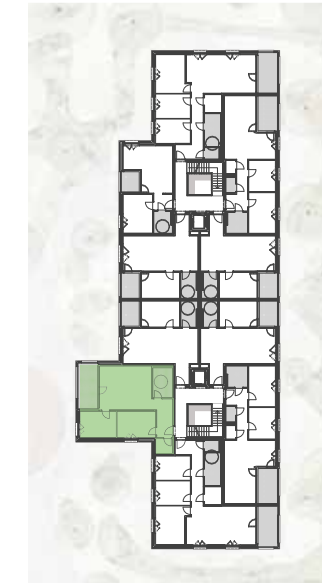
ZIMMER	3
WOHNFLÄCHE	72,60 m ²
LOGGIA	9,20 m ²

-  PARKETT
-  FLIESEN
-  BETONPLATTEN
-  KIESBELAG IN PRIVATGARTEN
-  KÜHLSCHRANKANSCHLUSS
-  GESCHIRRSPÜLERANSCHLUSS











TOP 3.3 | C2



TOP 3.3/C2

Obergeschoss III

ZIMMER	3
WOHNFLÄCHE	70,50 m ²
LOGGIA	11,60 m ²

-  PARKETT
-  FLIESEN
-  BETONPLATTEN
-  KIESBELAG IN PRIVATGARTEN
-  KÜHLSCHRANKANSCHLUSS
-  GESCHIRRSPÜLERANSCHLUSS