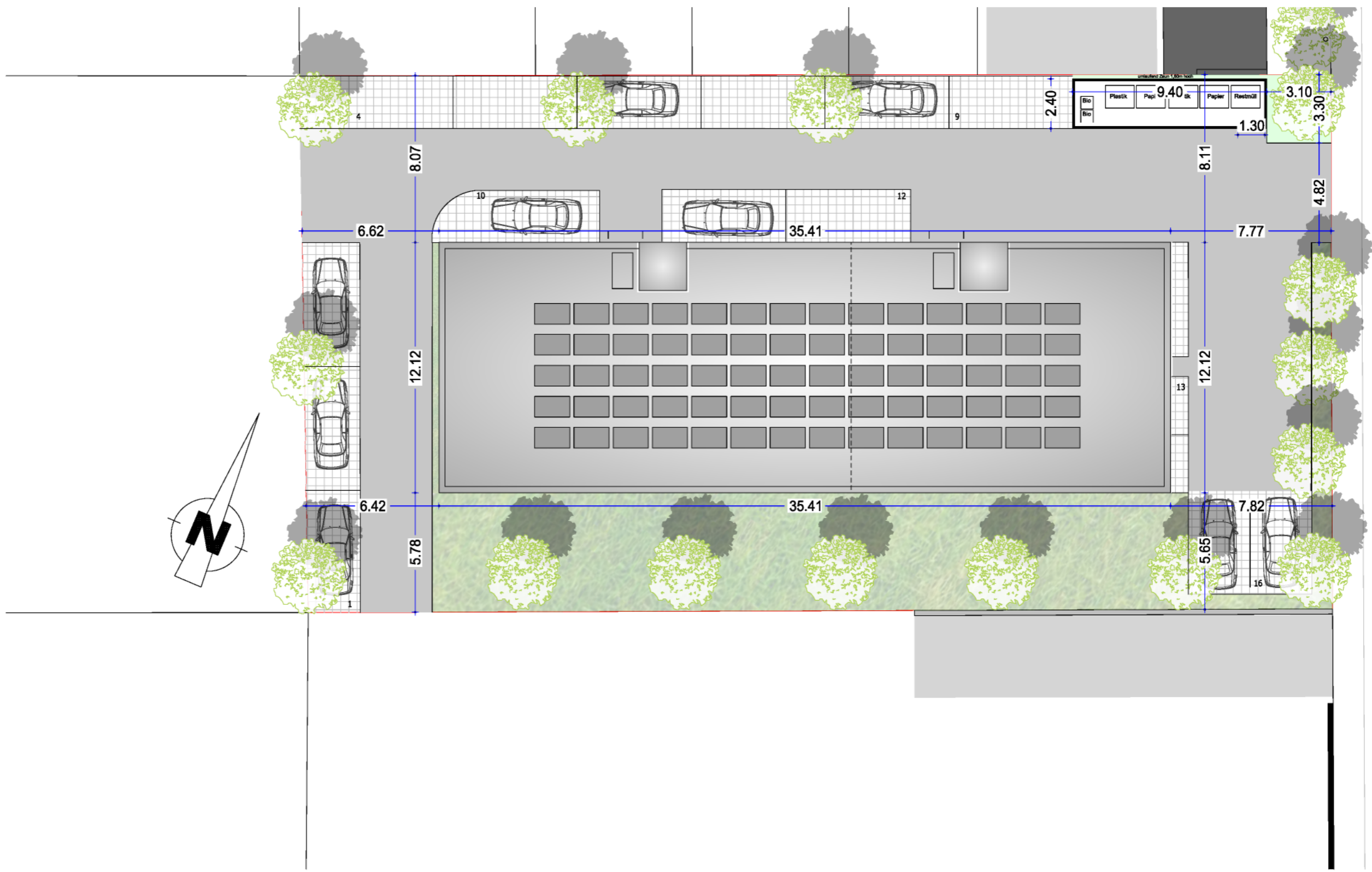


ZWEIRAUMWOHNUNGEN

Illstraße Feldkirch



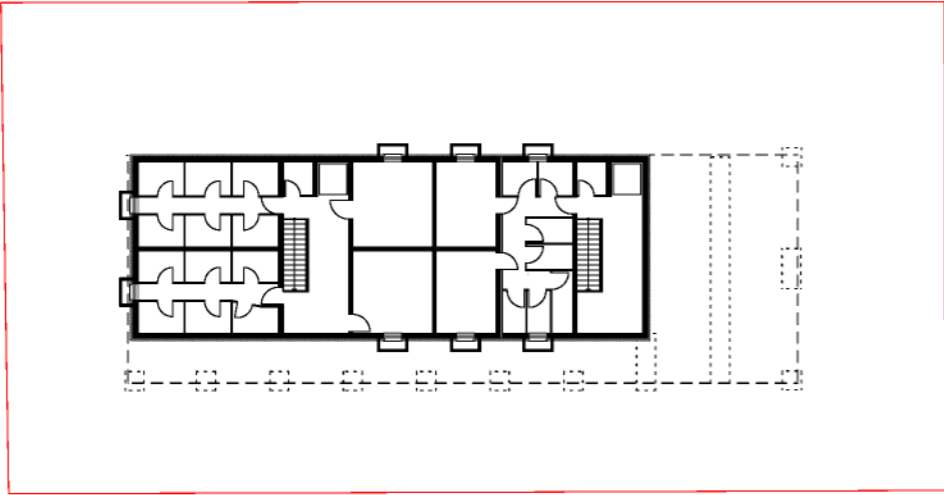
LAGEPLAN M 1/200



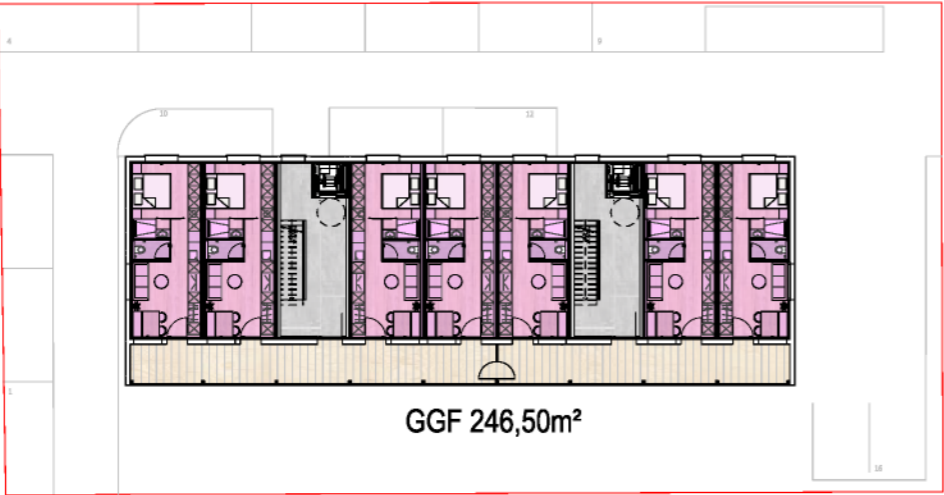


WIDMUNGPLAN M 1/500

EBENE -1

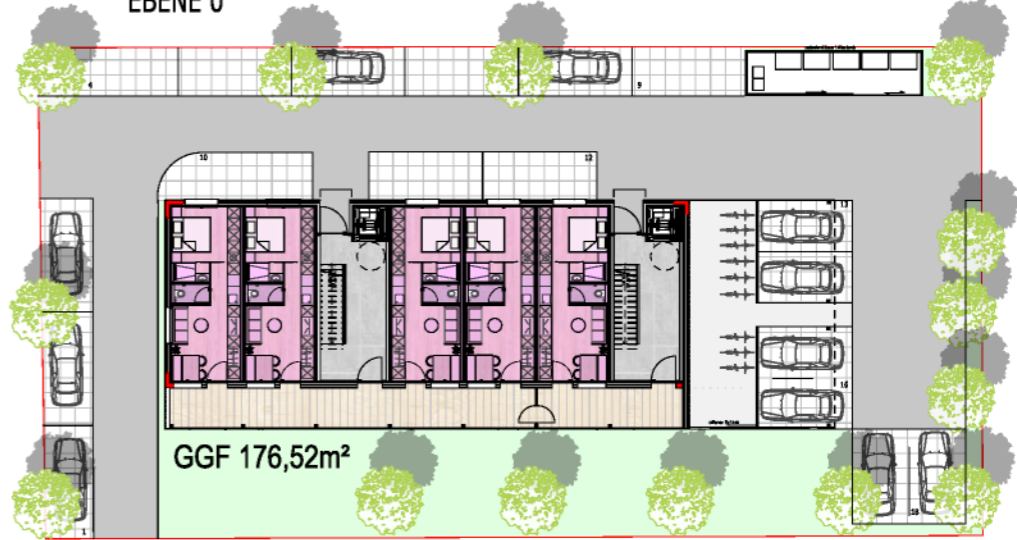


EBENE +1



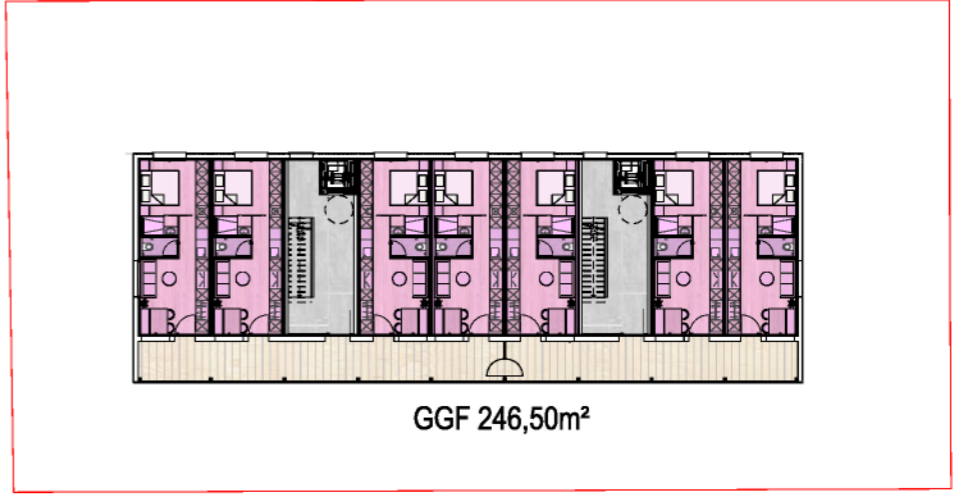
GGF 246,50m²

EBENE 0



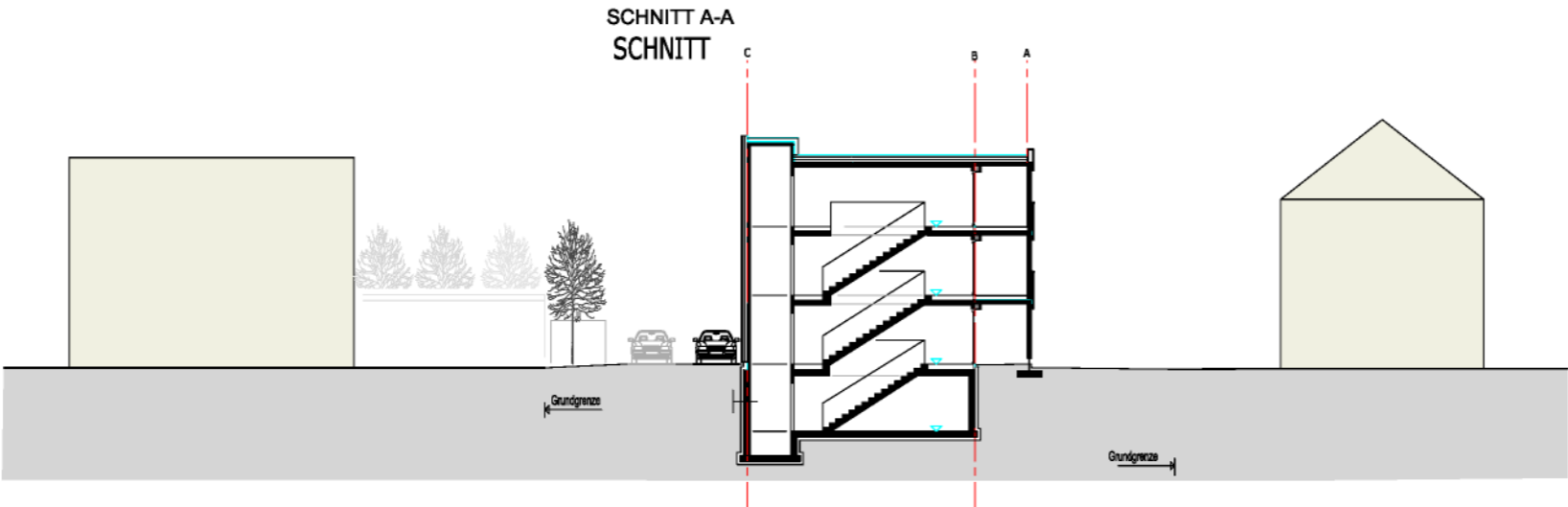
GGF 176,52m²

EBENE +2



GGF 246,50m²

SCHNITT A-A
SCHNITT



Baunutzungszahl

GGF 669,5m²

NGF 1292,0m²

51,82

EBENE -1



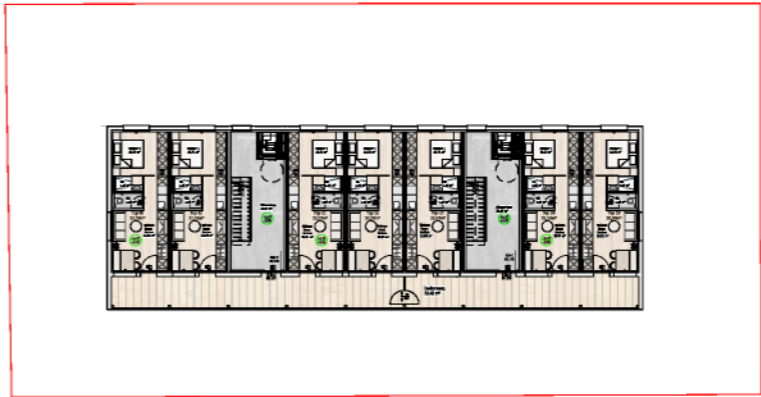
EBENE 0



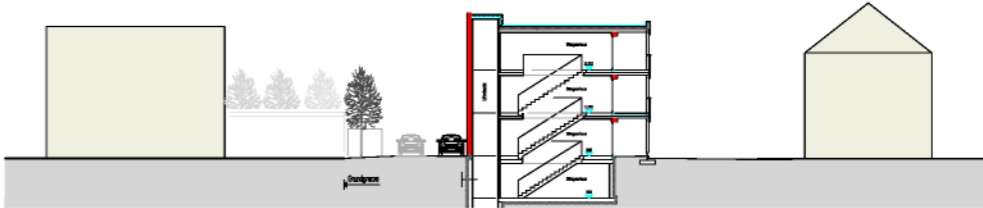
EBENE +1



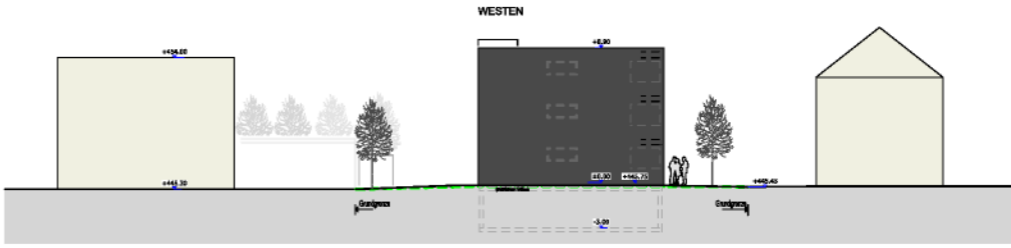
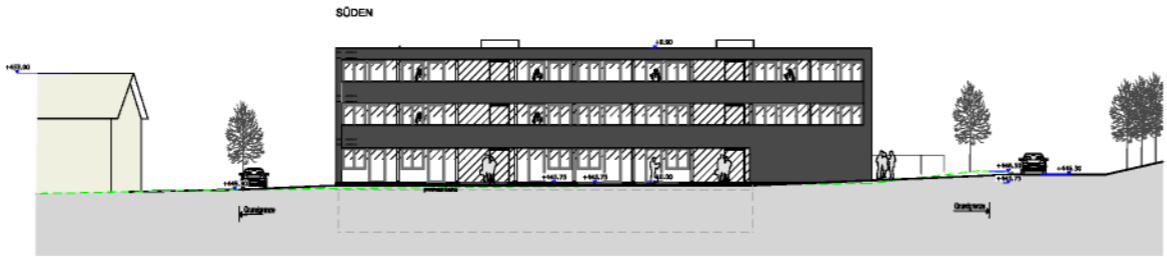
EBENE +2

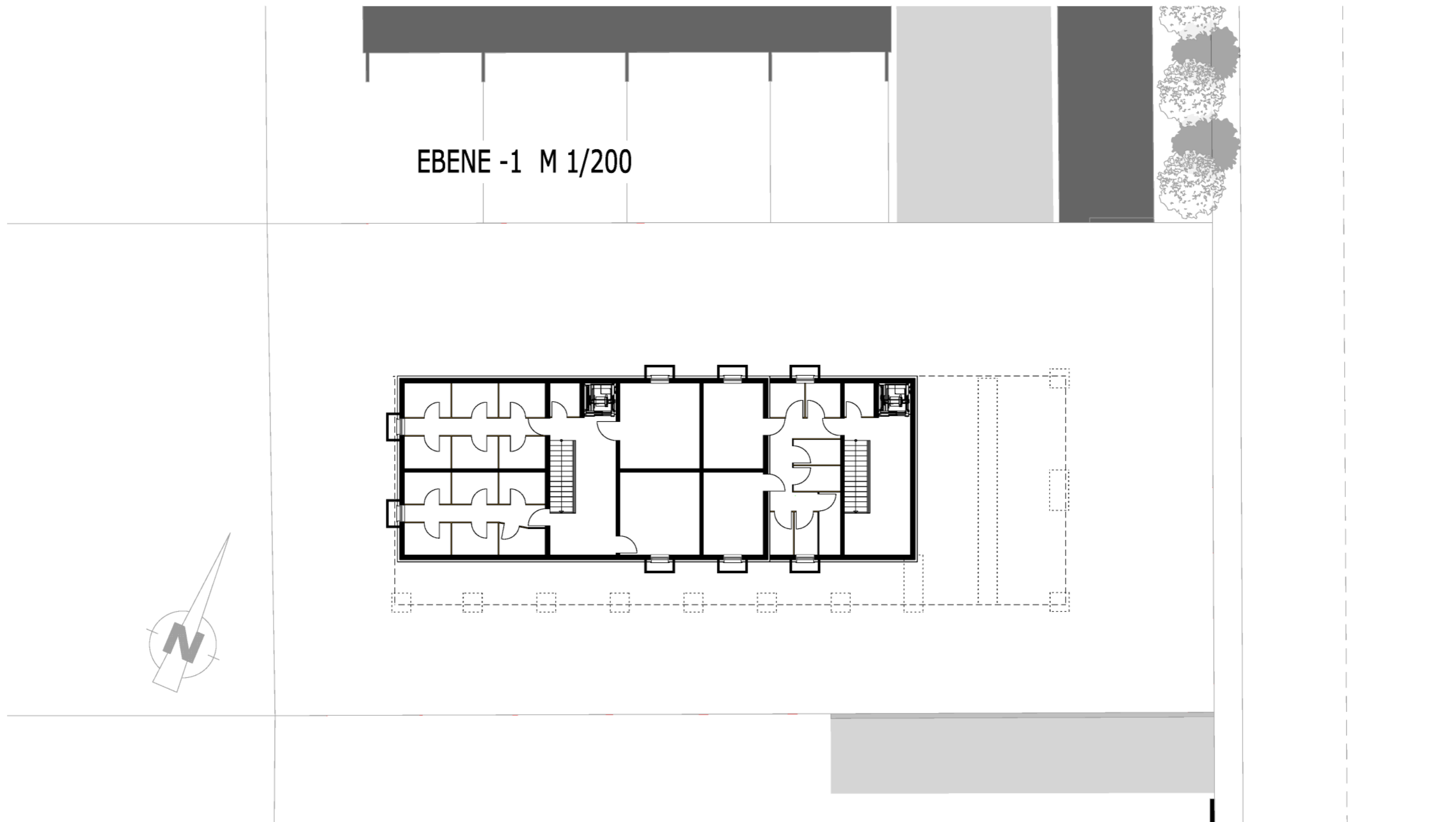


SCHNITT A-A



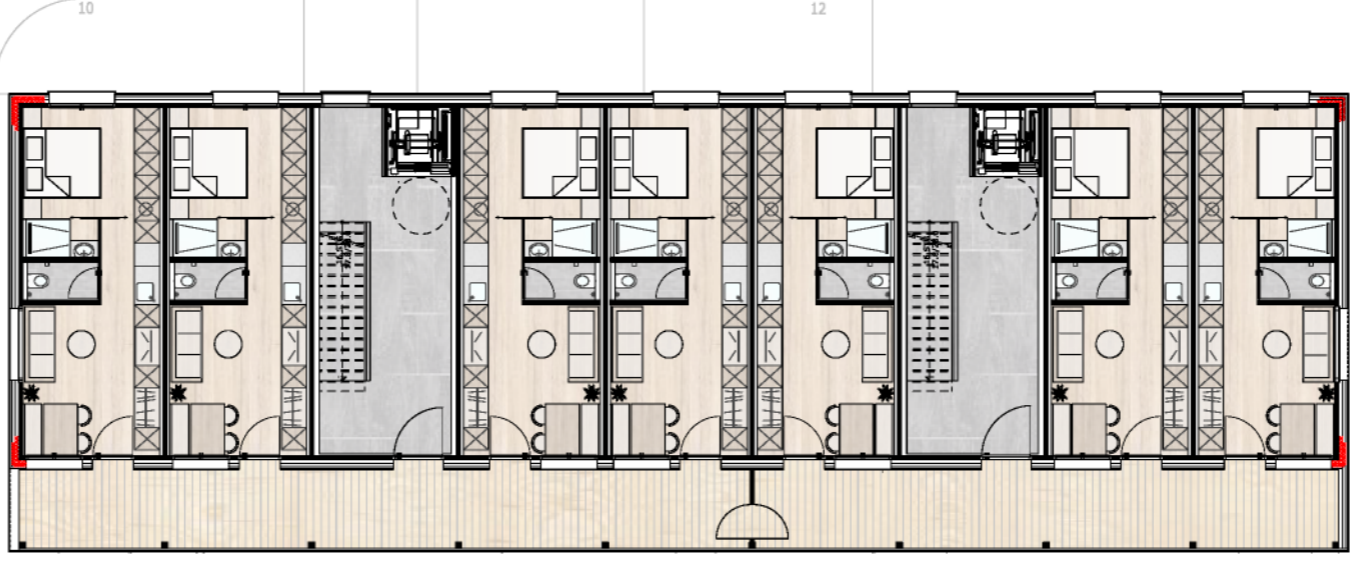
FASSADENMUSTER







EBENE +1 M 1/200



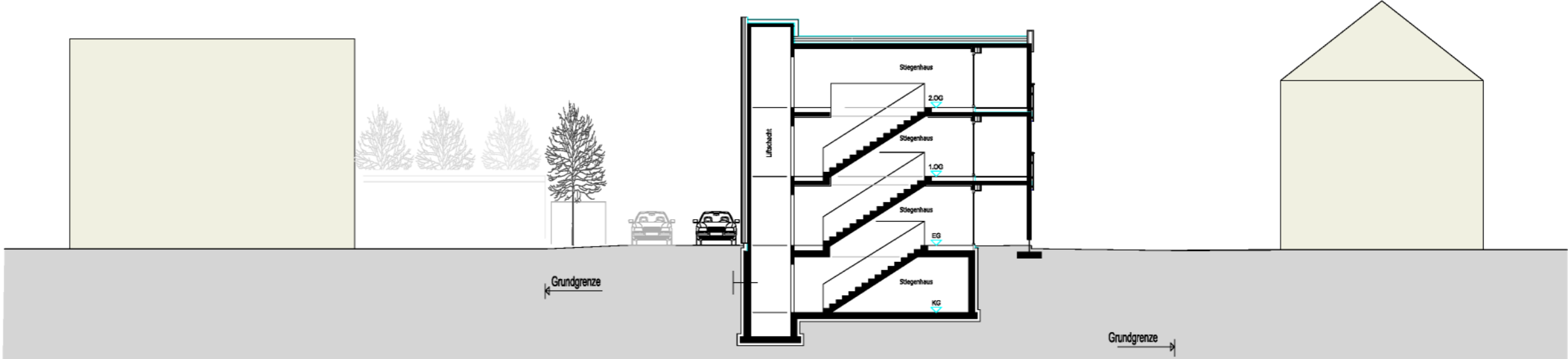
EBENE +2 M 1/200



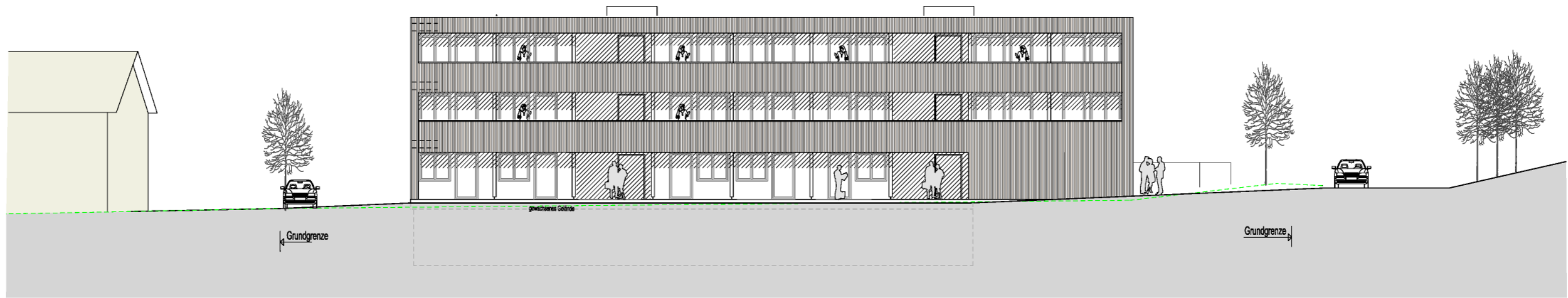
LÄNGSSCHNITT 1-1



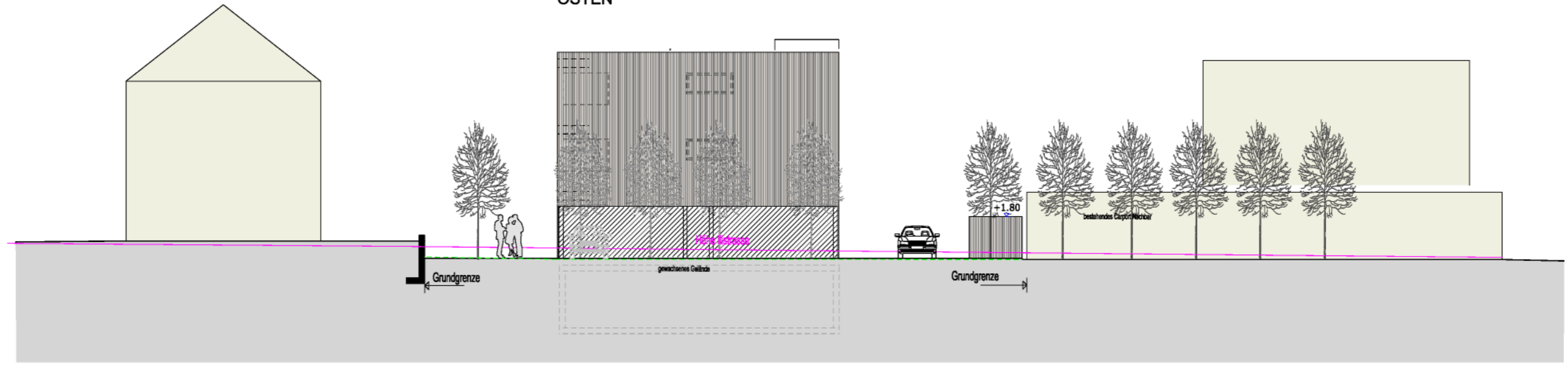
SCHNITT A-A



SÜDEN



OSTEN



NORDEN



WESTEN







