



Grundstück 1
303,55m²

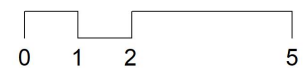
Grundstück 2
304,14m²

DOPPELHAUS in Hörbranz

Diele/Garderobe	5,00m ²	Carport	24,45m ²
Kochen/Essen/Wo	39,95m ²	Geräte	18,31m ²
WC	2,45m ²	Terrasse	15,97m ²
Techn./A.r./H.w.	12,47m ²	Garten 1	144,35m ²
Wohnfläche EG	59,87m ²	Garten 2	144,83m ²

WOM

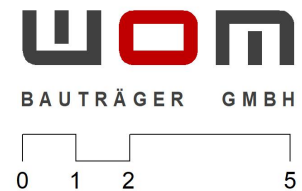
BAU TR Ä G E R G M B H

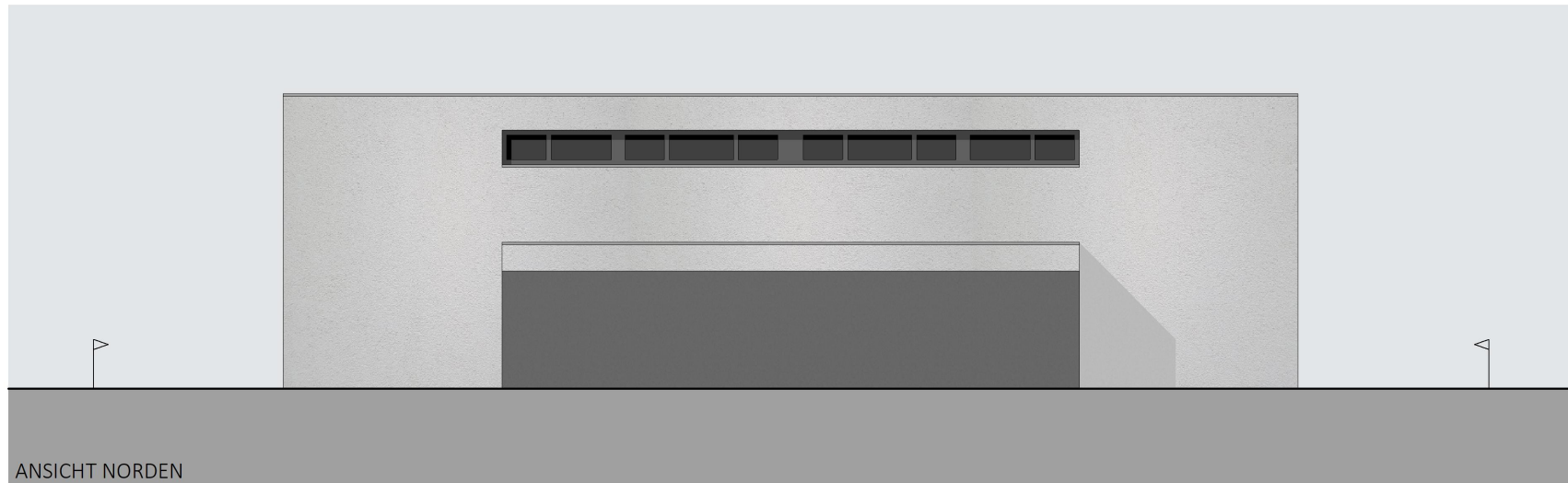
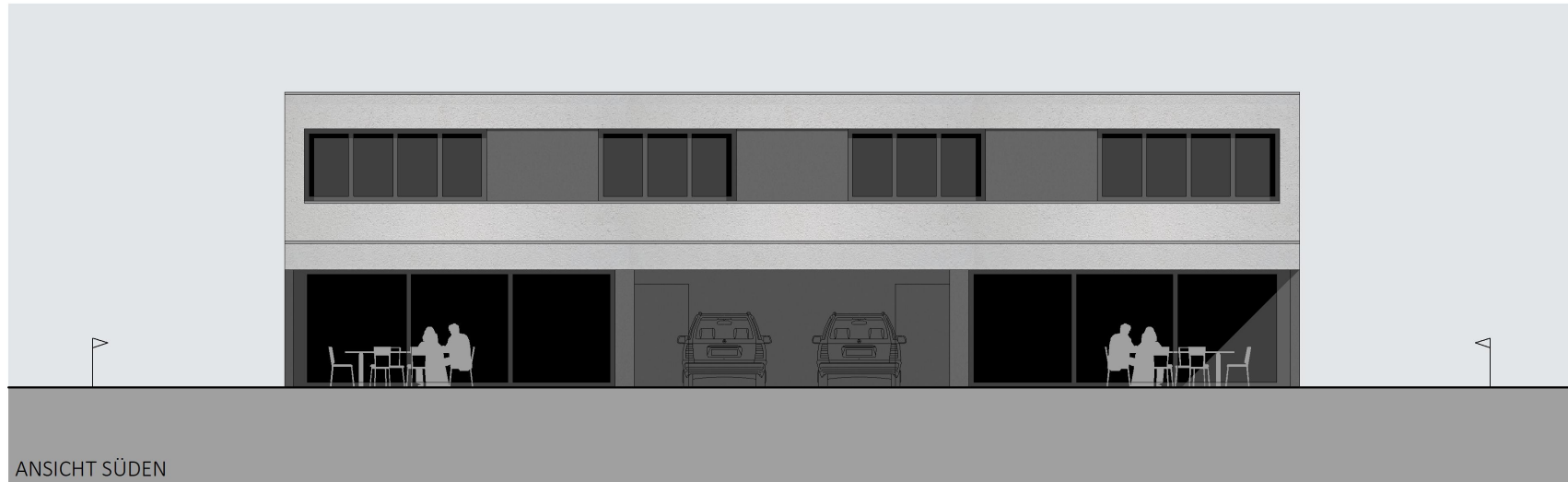




DOPPELHAUS in Hörbranz

Schlafen	14,47m ²
Zimmer 1	13,12m ²
Zimmer 2	14,78m ²
Bad	9,43m ²
Gang	4,81m ²
Wohnfläche OG	56,61m²



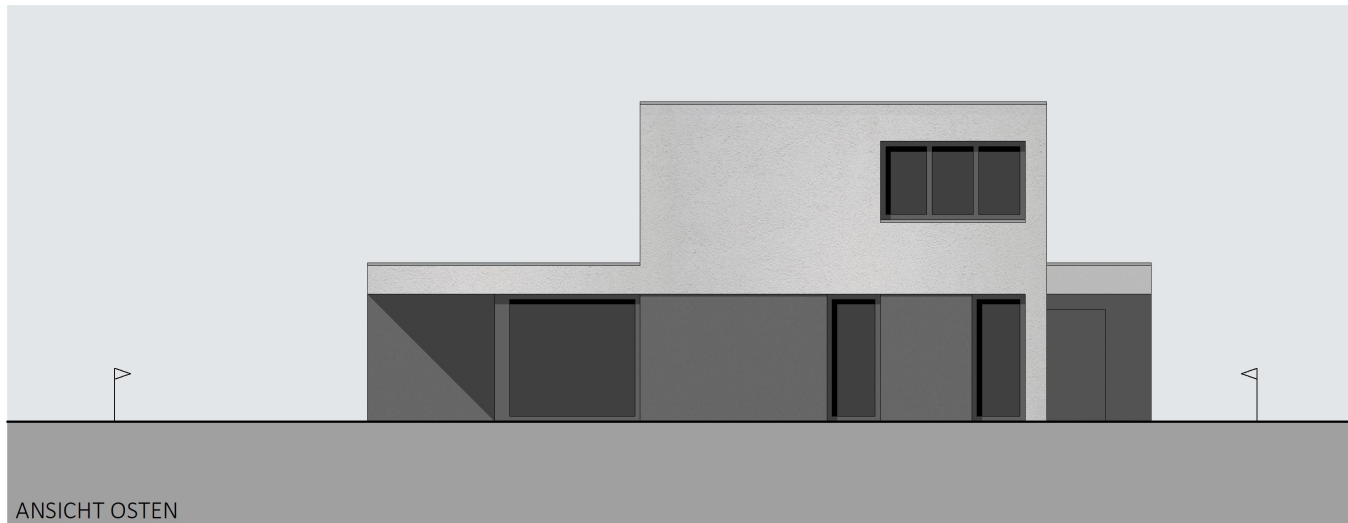
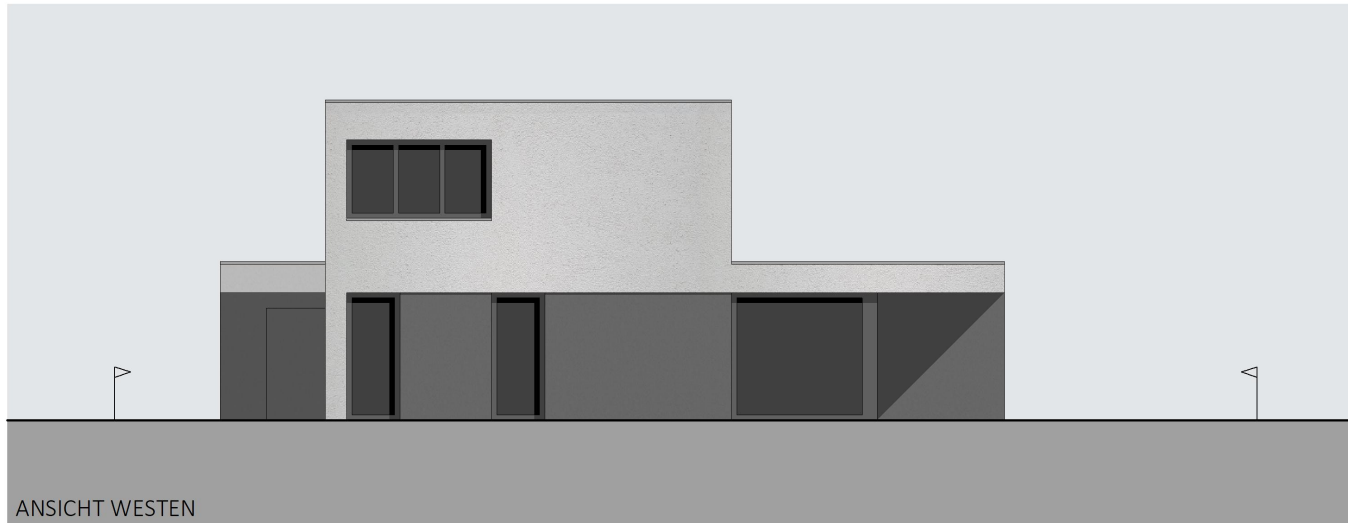


DOPPELHAUS
in Hörbranz

wom

BAUTRÄGER GMBH

A-6850 DORNBIRN, LUSTENAUERSTR. 64
WWW.wom-arch.at MAIL:info@wom-arch.at
TEL 05572/210123 FAX 05572/210123-20

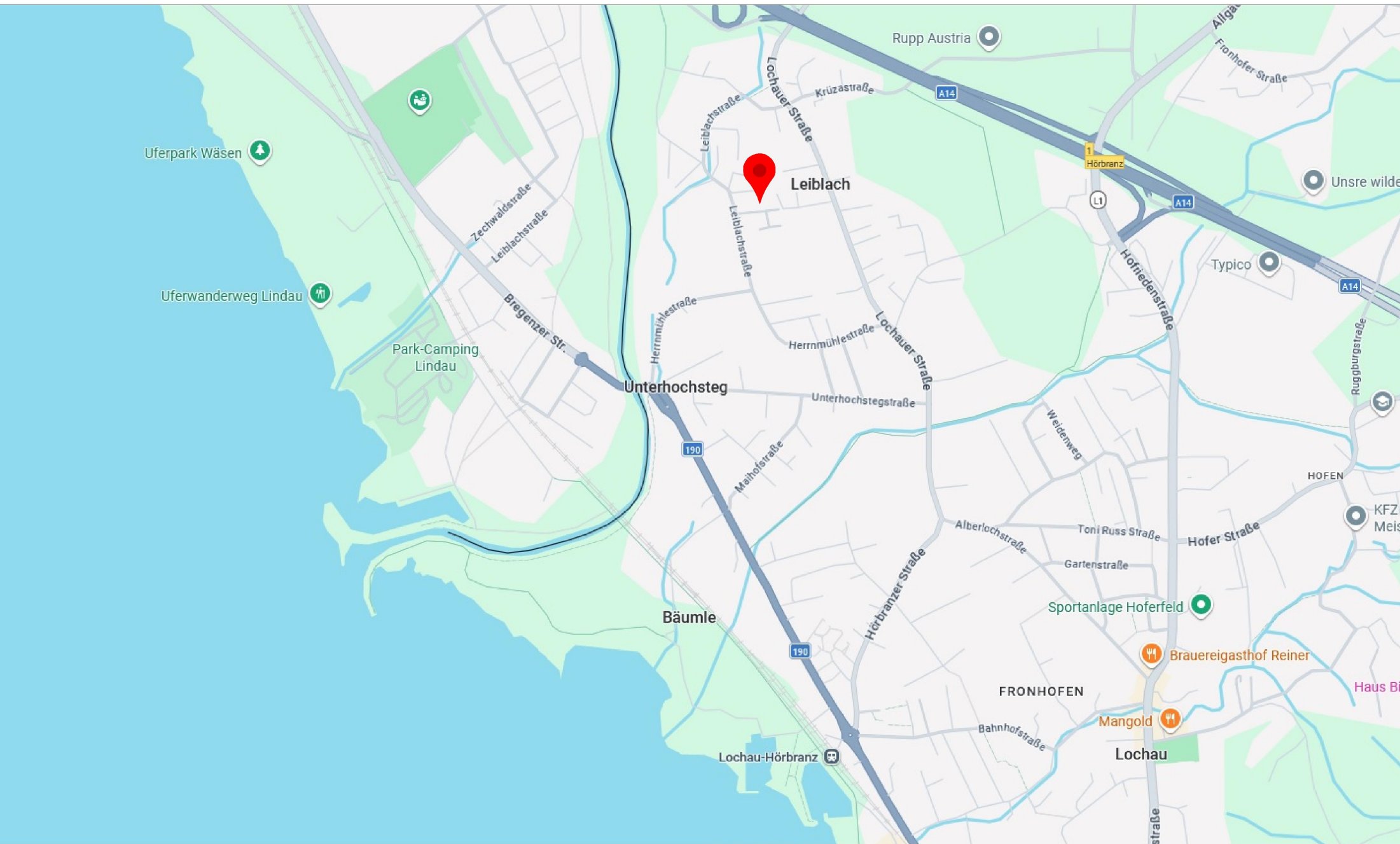


DOPPELHAUS
in Hörbranz

wom

BAUTRÄGER GMBH

A-6850 DORNBIRN, LUSTENAUERSTR. 64
WWW.wom-arch.at MAIL:info@wom-arch.at
TEL 05572/210123 FAX 05572/210123-20



DOPPELHAUS
in Hörbranz

Kontakt

WOM Bauträger GmbH
Lustenauerstraße 64
6850 Dornbirn

T: +43 5572 210 123 0
E: info@wom-arch.at
www.wom-arch.at