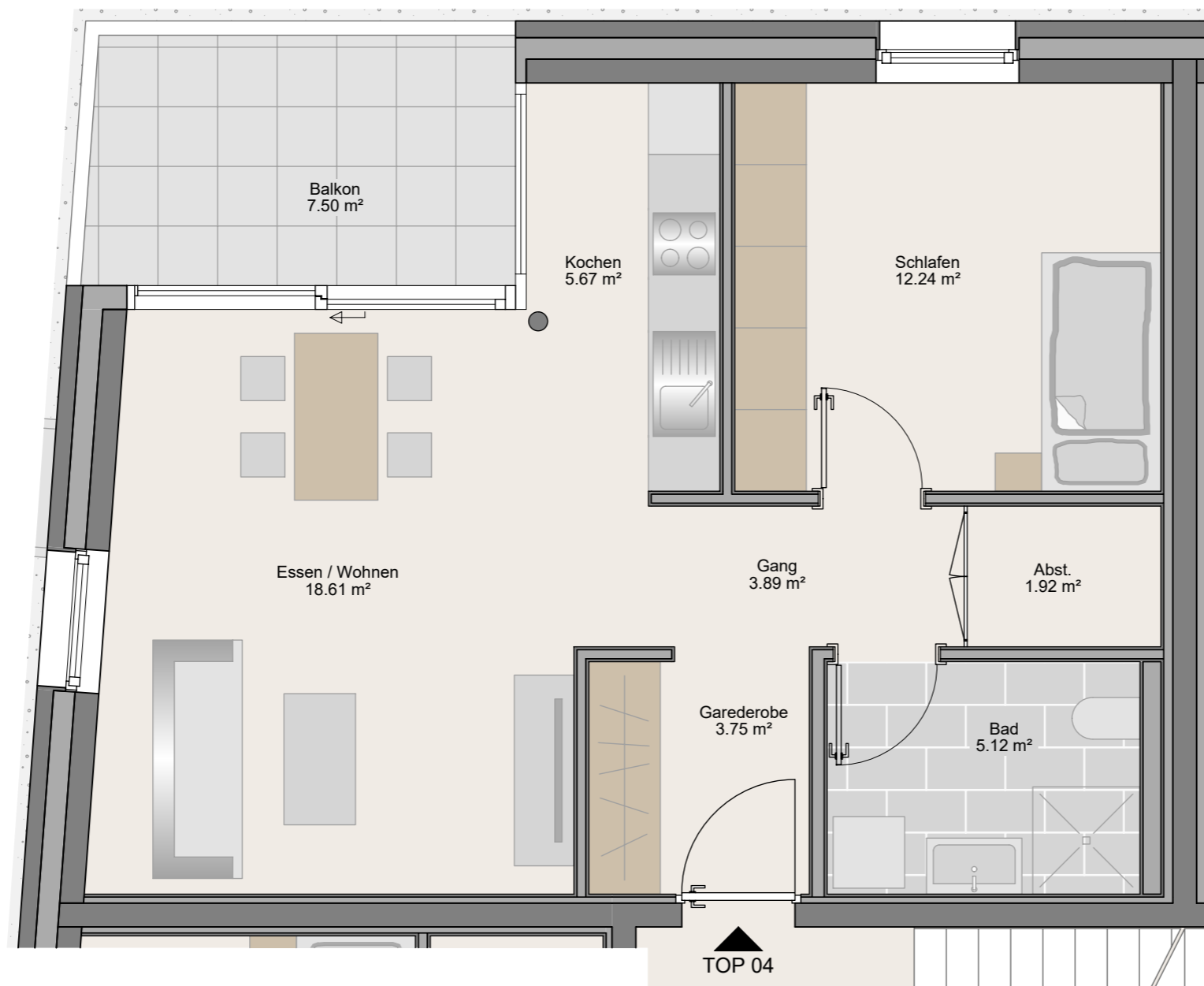
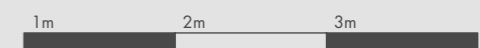
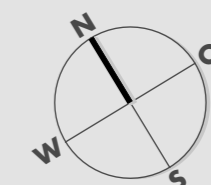
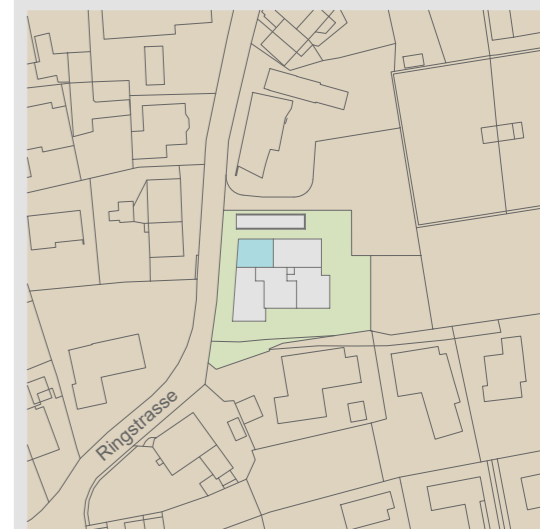


Wohnpark Ringstrasse Gisingen

TOP 04
2-Zimmer-Wohnung
Erdgeschoss 51.20m²



Essen/Wohnen	18.61 m ²
Kochen	5.67 m ²
Schlafen	12.24 m ²
Bad	5.12 m ²
Abstellraum	1.92 m ²
Garderobe	3.75 m ²
Gang	3.89 m ²
Wohnnutzfläche	51.20 m²
Balkon	7.50 m ²
Kellerabteil	4.23 m ²



Maßstab 1:50 (1cm = 50cm)

04.05.2022

