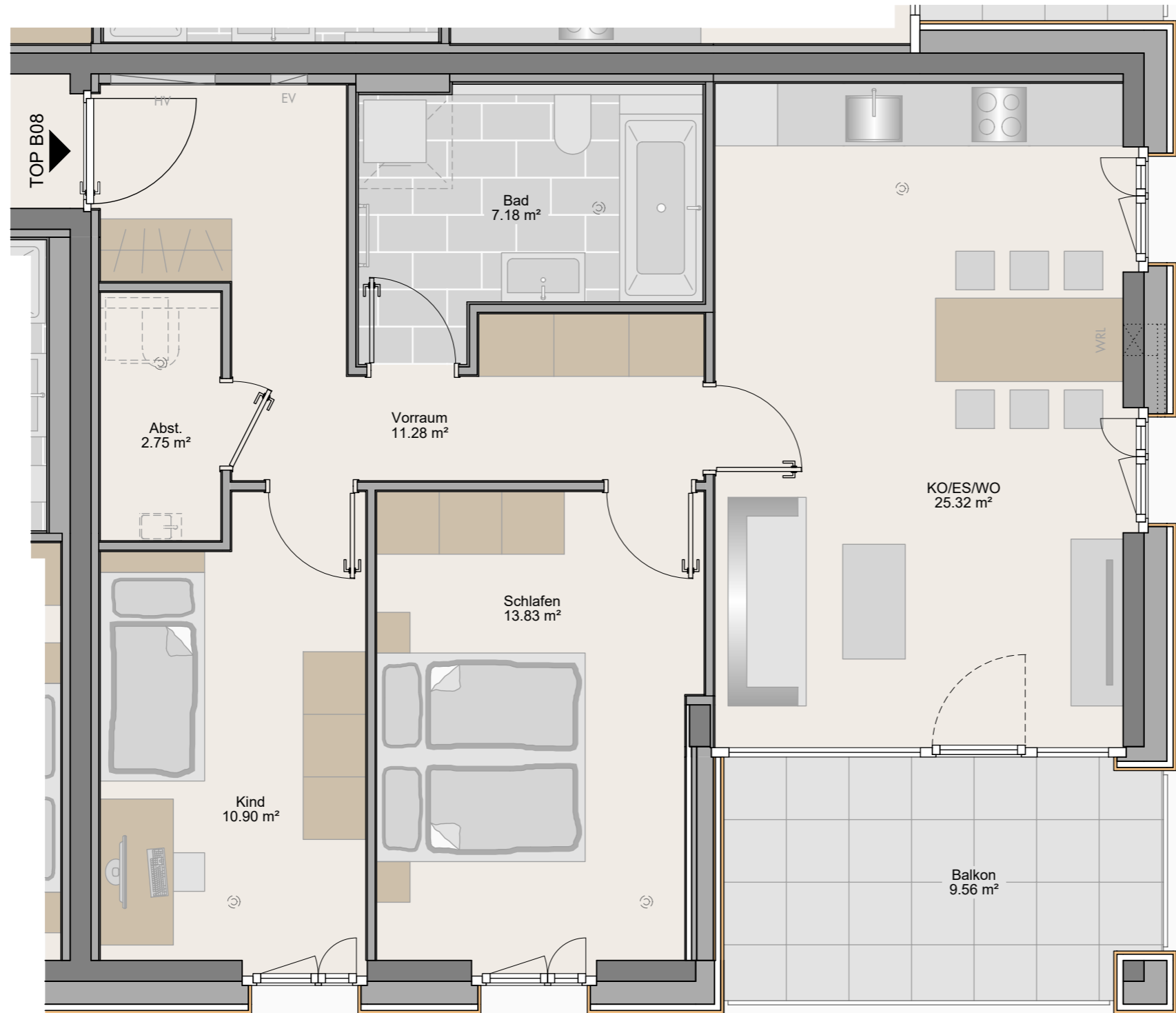
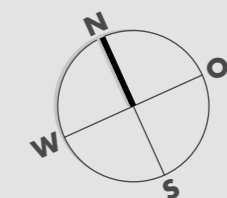
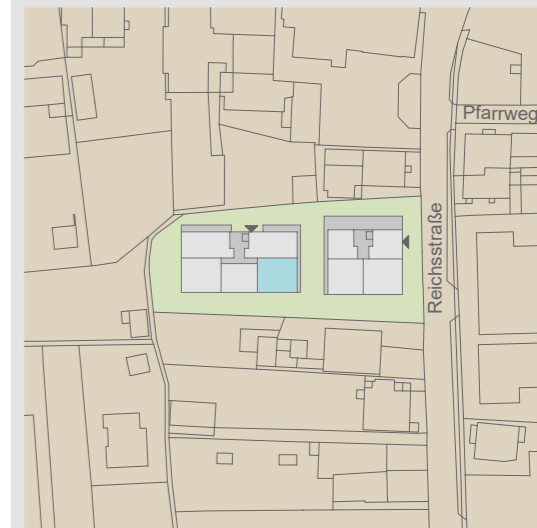


# Wohnanlage Zentrum Altstadt

TOP B08 - Variante 1  
3-Zimmer-Wohnung  
1.Obergeschoss 71.26m<sup>2</sup>



Wohnen/Essen/Kochen	25.32 m <sup>2</sup>
Schlafen	13.83 m <sup>2</sup>
Kind	10.90 m <sup>2</sup>
Bad	7.18 m <sup>2</sup>
Abstellraum	2.75 m <sup>2</sup>
Vorraum	11.28 m <sup>2</sup>
<b>Wohnnutzfläche</b>	<b>71.26 m<sup>2</sup></b>
Balkon	9.56 m <sup>2</sup>
Kellerabteil	9.27 m <sup>2</sup>



Maßstab 1:50 (1cm = 50cm)

08.05.2024